

Official Newsletter  
of  
**THE SPOTLIGHT THEATRICAL COMPANY**



*Fostering an outlet for creative youth and community,  
while seeking to produce vibrant, quality entertainment  
that enriches, engages and educates.*

# The SPOTLIGHTER

JULY 2019



**THE  
SPOTLIGHT  
THEATRICAL  
COMPANY  
ANNUAL GENERAL  
MEETING  
TUESDAY  
20TH AUGUST 2019  
7:00pm  
THE HALPIN  
AUDITORIUM  
SPOTLIGHT THEATRE  
COMPLEX  
185-7 Ashmore Rd,  
Benowa, Qld.  
Page 15  
Nomination form p16.**



**Young Adult Cabaret**  
Photo Courtesy  
Vargo Studios



*Spotlight Theatre is a foundation  
member of the Gold Coast  
Theatre Alliance.*



# SPOTLIGHT STAGE PRODUCTIONS

## A NOTE TO ALL PEOPLE INVOLVED:

*IT IS COMPANY POLICY THAT YOU ARE A MEMBER  
OF THE SPOTLIGHT THEATRICAL COMPANY.*

**Memberships commence January 1 to December 31.**

**(If you joined on or after November 1st your  
Membership is current for the following year.)**

**Please check to see that your membership is current.**

**The Annual fee is \$10 per annum.**

**You must be a Financial Member to vote at the AGM.**

**SPOTLIGHT THEATRICAL COMPANY REQUIRES  
A DEDICATED VOLUNTEER  
TO LOOK AFTER STAGE PROPERTIES.**

**Please Contact 07 5539 4255**

**email: [mailbox@spotlighttheatre.com.au](mailto:mailbox@spotlighttheatre.com.au)**

**IF YOU CAN ASSIST.**

THE SPOTLIGHT THEATRICAL COMPANY PRESENTS

# ALICE

IN *Wonderland*

CHOREOGRAPHER  
**GEORGIA BECK**

WRITER/DIRECTOR  
**NATHAN FRENCH**

MUSICAL DIRECTOR  
**MARTINA FRENCH**

**JULY 3-13, 2019**

**BASEMENT THEATRE**  
**2 SHOWS DAILY**  
**10:30AM & 2PM**

**BOOK & PAY**  
**07 5539 4255**  
**WWW.SPOTLIGHTTHEATRE.COM.AU**



*"Would you tell me, please, which way I ought to go from here?"*

*"That depends a good deal on where you want to get to."*

*"I don't much care where -"*

*"Then it doesn't matter which way you go."*

Quote - Lewis Carroll, Alice in Wonderland

## PRESIDENT'S REPORT

Congratulations to Clay English and his team for producing such an outstanding show with ***Catch Me If You Can*** in the Halpin Auditorium. The audience were in awe of the quality of the cast and their positive comments after each show were well deserved. Well done to all cast and crew, you were all a credit to your craft.



If you didn't get to see our Young Adults group performance then you missed seeing the stars of the future. They entertained the enthusiastic audience with their self-written ***Showcase*** and left us all wanting more. Thank you and well done to this great group of young adults.



The following weekend we were entertained by our musical youth theatre classes. WOW!! To see a hundred students on stage all at once, all in step and time, shows me that Spotlight has a bright future. This was three wonderful nights of entertainment. It makes all the effort that the Management Committee put in to keep our Company profitable, worthwhile, and the reason we do what we do. Hannah and Matt have done an outstanding job with these students. Congratulations and well done!

***Alice in Wonderland*** directed by Nathan French opens on 3 July, in the Basement Theatre. There will be two shows a day at 10.30am and 2pm to give you plenty of opportunities to bring your children and grandchildren. Adult tickets are at children's prices. This is pantomime at its best, so come along and join in the fun – lots of audience participation.

**Costume Hire** shop is holding its own in this difficult retail time. The Sale went well on the Saturday, however the inclement weather put a dampener on the Sunday. Don't forget as a member you get a discount on any hire, so please support the shop and help the theatre prosper.

***Higher and Higher Revival, the Motown Musical*** directed by the very talented Jamie Watt has now taken residence in The Halpin Auditorium and is getting ready for opening night on 2 August. **Tickets are on sale now**, so secure your seat for this foot tapping show online at [www.spotlighttheatre.com.au](http://www.spotlighttheatre.com.au)

***Kelly*** directed by Cilla Scott has now been cast. This show will be in the Basement Theatre and opens on 20th September.

***Kinky Boots*** directed by Katie Steuart-Robins has held their auditions and the cast will be announced soon.

We have been doing some regular maintenance around the theatre and as the building ages we



Nathan French  
Director - *Alice  
in Wonderland*

have several items that have reached their use by date, so these need to be replaced. We can't do this without your continuing support. If every member came to two performances a year, bought a drink, a program and some raffle tickets the pressure would be off the bank account. This is the Members theatre so please help us do these needed upgrades. Why not introduce someone new to the theatre and bring them along to see one of the shows. They won't be disappointed and it will benefit us all.

As always, I look forward to catching up with you at the theatre soon, so until then look after yourselves and each other and remember a smile is more infectious than the 'flu, so keep smiling and spread.

Best regards

**Duncan Sims**

## THANK YOU *Grill'd* BENOWA GARDENS

and all those patrons and members who voted for The Spotlight Theatrical Company. We won first prize in the competition for most bottle tops last month and received \$300:00.

PLEASE CONTINUE TO SUPPORT OUR LOCAL SPONSORS.

### HELP YOUR THEATRE BY SUPPORTING OUR LOCAL SPONSORS



**Grill'd Benowa Gardens**  
– a local Sponsor

**LOCAL MATTERS**

[GRILLD.COM.AU/LOCALMATTERS](http://GRILLD.COM.AU/LOCALMATTERS) ~ #GRILLD



## Thank You

CITY OF  
**GOLDCOAST.**

for Divisional funding to the value of \$2000  
to update computers and office equipment.

# Spotlight on Youth Theatre



## TEACHING FRATERNITY & ADMINISTRATORS:

HANNAH CROWTHER (*Int. Drama & Snr. Music Theatre Teacher*)

MATT PEARSON (*Music Director*)

SHELLEY GRACE (*Head Teacher Senior Drama*)

TAYLOR HOLMES (*Assistant Teacher Senior & Intermediate Drama*)

KIRSTIE SLEEMAN (*Head Teacher Junior Drama*)

VAL LEFTWICH (*YT Administrator*)

KAY HAWKER (*YT Accountant*)

We are almost at the end of Term 2 and I thank all parents who made payments promptly or contacted me for a plan.

Shelley and Taylor have now announced their production for the year and the students are really excited to be doing ***The Almost Complete Works William Shakespeare*** (Abridged). This is a very light-hearted look at Shakespeare; a combination of Shakespeare meets ***The Play That Goes Wrong***, in other words great fun.

If you like Shakespeare, you will like this show. If you hate Shakespeare, you will love this show. All takes place on the 6th and 7th September in The Halpin Auditorium.

Matt and Hannah have just finished their ***Showcase*** for 2019 and what a great display it was from all classes of Musical Theatre. Last weekend the Adult Music Theatre students were amazing and showed just how much talent we have produced over the years, many of these students being with Spotlight since Intermediate classes.

Young Adult performance



This weekend we had 100 Intermediate and Senior Music Theatre students performing on stage. The final number had 100 students in it and it was fantastic. The Senior's number *Amazing Grace* was just that, amazing, such beautiful voices and wonderful harmony.

The Intermediate class performed so well. For most of the



Young Adult performance





*Music Theatre Showcase  
Courtesy Val Leftwich*

students it was their first time on the big stage and they took it all in their stride.

At the end of the show Matt and Hannah announced the programme for the end of the year productions, viz:

Intermediate Music Theatre will do a special **Showcase**; Middle School: The two classes will combine to do **Thoroughly Modern Millie Jr**; Senior Music Theatre: **All Shook Up** and Adult Music Theatre: **Avenue Q**.

The Junior Drama group are performing **Twisted Tales and Crocodile Tales** at the end of the year and Miss Kirstie has been auditioning the students for the various roles.

Music Theatre teachers Matt and Hannah are off to America on 2nd July for a Broadway Workshop and will be returning on the 17th in time for afternoon classes. Our Senior Drama Teacher Miss Shelley will take Tuesday's class.

Term three commences week beginning Monday the 15th July. Kay will send out invoices to all parents and we would appreciate payment by the second week of term. We really do appreciate you paying on time but if you have a problem then I am only a phone call away to talk and make up a plan for you.

Thank you for all the parents that supported the Mid-Year Showcase. We played to full houses for all three performances and we appreciate that support.

I will be going overseas for five weeks and will return the second week of August. During that time, if you have any problems or enquiries, please contact Kay Hawker who will do her best to help you. (email [dkhawker@westnet.com.au](mailto:dkhawker@westnet.com.au))

**Valerie Leftwich – Spotlight Youth Theatre Administrator**



Photos - Val Leftwich



**SPOTLIGHT  
MUSIC THEATRE  
SHOWCASE**





**2019  
PERFORMANCE SCHEDULE  
Young Adult Cabaret  
14th and 15th June**

**Music Theatre Showcase  
Intermediate and Senior Music Theatre  
21st, 22nd and 23rd June**

**Senior Drama  
6th and 7th September**


**Intermediate Drama  
18th, 19th and 20th October**

**Junior Drama  
29th, 30th November and 1st December**

**Intermediate & Senior Music Theatre  
(Tuesday 4pm, Wednesday 5:30pm classes)  
End of Year Showcase  
5th, 6th and 7th December**

**Senior Music Theatre Production  
12th, 13th and 14th December**

**Young Adults Production  
17th and 18th December**

 THE SPOTLIGHT THEATRICAL COMPANY PROUDLY PRESENTS

CONCEPT BY  
JAMIE WATT &  
PETER LAUGHTON

DIRECTOR  
JAMIE WATT



Higher  
&  
Higher  
REVIVAL

CHOREOGRAPHERS  
JAMIE WATT, KELLIE NIEBLING, &  
LAUREN ELIZABETH WORMALD

MUSICAL DIRECTOR  
BEN MURRAY

THE MOTOWN MUSICAL

HALPIN AUDITORIUM  
2 - 24 AUGUST 2019

BOOK & PAY

(07) 5539 4255

WWW.SPOTLIGHTTHEATRE.COM.AU

**JAMIE WATT and his sensational  
Higher & Higher Revival Cast**



**JAMIE WATT**



**JACQUELYN TURNER**



**CAROLINE TAYLOR**



**HANNAH RIGBY**

**ENSEMBLE SINGERS**



**GEORGIA BECK**



**SAMANTHA PRICE**



**NAOMI MOLE**



**AMBER DOUGLAS**

## DANCERS



JESSICA NG



SARAH MCINTOSH



KELLIE NIEBLING



CHARLOTTE SCHMIDT



SUNNY JEGAMOCHAN



JACKSON KOOK

## Joel Beskin's 'Theatre Roundup'

is on Air, Tuesday every week.  
Tune in to 4CRB 89.3FM between 2.35pm and 3pm  
for Community Theatre News

The Spotlight Theatrical Company Acknowledges and Thanks the

CITY OF  
**GOLDCOAST.**

Division 7 and Councillor Gary Baidon  
for the Grant Donation to our Community Theatre.

*Kinky Boots*

HAS BEEN CAST AND WILL BE ANNOUNCED AS SOON AS CAST MEMBERS  
HAVE BEEN ADVISED. CHECK OUT OUR WEBSITE AND FACEBOOK.  
AUGUST SPOTLIGHTER WILL HAVE ALL THE DETAILS.

The Spotlight Theatrical Company  
proudly presents



Book by  
**Harvey Fierstein**

Music and Lyrics by  
**Cyndi Lauper**

Original Broadway Production Directed and Choreographed by  
**Jerry Mitchell**

Based on the Miramax motion picture *Kinky Boots*  
Written by **Geoff Deane and Tim Firth**

Licensed exclusively by Music Theatre International (Australasia).  
All performance materials supplied by Hal Leonard Australia.

Directed by  
**Katie Grace**

Choreographers  
**Georgia Beck & Jackson Kook**

Music Director  
**Steven Days**

**1 – 23 NOVEMBER 2019**  
**HALPIN AUDITORIUM**

**Book now on (07) 5539 4255**  
**or online at [www.spotlighttheatre.com.au](http://www.spotlighttheatre.com.au)**

**BRAD KENDRICK HAS BEEN CAST AS NED KELLY,  
MITCH WALSH AS DAN KELLY and NATHAN FRENCH AS THE GUARD.  
Director Cilla Scott will introduce the Cast in the August Spotlighter.**



THE SPOTLIGHT THEATRICAL COMPANY

PROUDLY PRESENTS

# **KELLY**

**BY MATTHEW RYAN**

**DIRECTED BY CILLA SCOTT**

BASEMENT THEATRE  
2019

20 SEPTEMBER – 5 OCTOBER

BOOK NOW  
07 5539 4255

or online at [www.spotlighttheatre.com.au](http://www.spotlighttheatre.com.au)



Members are advised that the  
**ANNUAL GENERAL MEETING**  
will be held on  
**TUESDAY, 20 AUGUST 2019**  
**COMMENCING AT 7.00pm SHARP**  
at  
**Spotlight Theatre**  
**187 Ashmore Road, Benowa**

***All members are urged to attend. (For voting rights you MUST be a Financial Member.)***

**AGENDA**

Apologies  
Minutes of previous Annual General Meeting  
Matters arising from Minutes  
President's report  
Treasurer's report and Auditor's financial statements  
Other reports  
Election of new office bearers  
General Business

If any person wishes to add an item to the Agenda, this must be put in writing, and seconded by another financial member. Any additions must be received by the Secretary seven (7) days prior to the meeting.

**Nomination for Life Membership according to Constitution:**

5(c) Life Membership – The title of 'Life Membership' may be awarded by The Company, at the Annual General Meeting, to a person who has rendered services to The Company for not less than ten years. Any Member of The Company may submit candidates for Life Membership up to one month prior to the Annual General Meeting. A Committee of three (3) Life Members and four (4) Councillors must vet such nominations. When the Committee is satisfied that all requirements are met, the Council shall award Life Membership to the selected Member who will be notified at the Annual General Meeting. To preserve the dignity of Life Membership, no more than two persons shall be admitted as such, during one financial year. *Nomination to be forwarded to [shirley@spotlighttheatre.com.au](mailto:shirley@spotlighttheatre.com.au) by 23rd July 2019.*

The bar will be open for drinks and if you wish to stay after the meeting for a drink, tea or coffee and a chat, a small plate of supper would be appreciated.

*Shirley King  
Hon. Secretary*

To: **The Returning Officer**  
**The Spotlight Theatrical Company**  
**PO Box 8074**  
**GOLD COAST MAIL CENTRE QLD 9726**



Re: *Annual General Meeting – Nomination for office*

I (please print name) .....

hereby declare that I am willing to offer myself for election to a position

of: .....

to the Company for the term 2019/2020.

Signed: ..... Date .....

Nominated by: ..... Signature.....

Seconded by: ..... Signature.....

**PLEASE NOTE: All nominations must be received in writing by the Returning Officer no later than 24 hours prior to the time for commencement of the meeting.**



*All Playbill 2020 Submissions  
need to be with the  
Production Committee by 30th June.*

**The Spotlight Theatrical Company**  
**185-187 Ashmore Road, Benowa**  
**or mail to: Production Committee**  
**The Spotlight Theatrical Company**  
**PO Box 8074 Gold Coast Mail Centre, Q 9726.**



Spotlight Theatre  
Artist's Review Seniors  
known as

# STARS

*Noni Buckland – STARS Liaison*

Since the last newsletter we have completed two shows at the following venues:-

Bluecare Pineshaven and Bupa Banora Point

This month has been quieter as some of our members are on holidays, but we have a busy month ahead.

We will also be rehearsing new numbers and putting together

costumes and numbers for our November and December Christmas shows.

I have included two photos from our current show. One photo of Marlene in her Hello Dolly number and one of Lyn in her Broadway Medley number.

Thats all from the **STARS** and now back to the boards.

**Noni**



# The Spotlight Theatrical Company



*"Fostering an outlet for creative youth and community, while seeking to produce vibrant, quality entertainment that enriches, engages and educates."*

Rev  
5

# 2019 PLAYBILL

Spark & the Crystal Crusade	Basement	9 - 19 January
The Little Mermaid	Halpin	8 February - 2 March
A Slice of Saturday Night	Basement	22 March - 7 April
Catch Me If You Can	Halpin	17 May - 8 June
Young Adult Cabaret	Halpin	14, 15 June
Music Theatre Showcase	Halpin	21, 22, 23 June
Alice in Wonderland	Basement	3 - 13 July
Higher & Higher Revival	Halpin	2 - 24 August
Senior Drama	Halpin	6, 7 September
Kelly	Basement	20 Sep - 5 October
Intermediate Drama	Basement	18, 19, 20 October
Kinky Boots	Halpin	1 - 23 November
Junior Drama	Basement	29, 30 Nov, 1 Dec
Int. & Snr. Music Theatre		
End of Year Showcase	Halpin	5, 6, 7 December
Snr. Music Theatre Production	Halpin	12,13,14 December
Young Adult Production	Halpin	17, 18 December
Spotlight On Christmas	Halpin	20, 21 December

*Disclaimer: Subject to change without notice.*



**TICKET PRICING & BOOKINGS:**  
[www.spotlighttheatre.com.au](http://www.spotlighttheatre.com.au) p. (07) 5539 4255  
 185-187 Ashmore Rd, Benowa Qld  
[facebook.com/SpotlightTheatricalCompany](https://www.facebook.com/SpotlightTheatricalCompany)

*Spotlight Theatre is a Foundation Member of the Gold Coast Theatre Alliance*

## Joel Beskin's 'Theatre Roundup'

is on Air, Tuesday every week. Tune in to 4CRB 89.3FM between 2.35pm and 3pm for Community Theatre News

# TICKET PRICING



## The Halpin Auditorium Musicals

Opening Night \$37, Adults \$34, Concession \$30,  
Member \$29, Child (under 16) \$25,  
Group 10+ \$31

## Basement Theatre Plays

Opening Night \$37, Adults \$32, Concession \$29,  
Member \$27, Child (under 16) \$25,  
Group 10+ \$29

**(Note: BT Musicals as per The Halpin Auditorium)**

**PANTOMIMES: All tickets \$16, Group of 10+ \$15.**

### NOTE

**TICKETS WILL ONLY BE HELD FOR 72 HOURS  
OR 3 BUSINESS DAYS.**

## SEASON TICKETS *Great Bargains!*

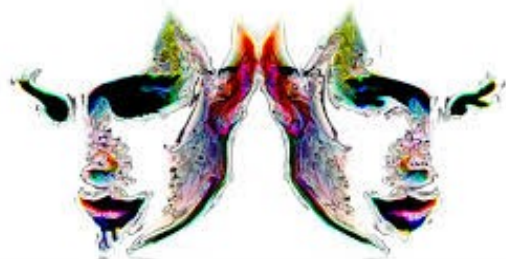
Get in early! CONTACT BOOKINGS 07 5539 4255. \* Special Conditions apply.



Celebrating 60 years of  
Spotlight Theatrical Company  
Diamond Anniversary, 2015

## Season Ticket

SPOTLIGHT THEATRICAL COMPANY



Not Transferable: Not Redeemable for Cash  
Bookings Essential

Authorised by : \_\_\_\_\_

Transaction ID: \_\_\_\_\_

This certificate entitles :-

To : \_\_\_\_\_ Shows

Valid: From \_\_\_\_\_ To: \_\_\_\_\_

**NOT VALID: OPENING OR CLOSING NIGHT PERFORMANCES**

185 Ashmore Road BENOWA QLD 4217 Phone: 5539 4255

email: [mailbox@spotlighttheatre.com.au](mailto:mailbox@spotlighttheatre.com.au)



For an update on all current and scheduled plays and shows by Gold Coast and Tweed Shire member groups visit the website:  
<http://www.goldcoasttheatre.com.au>

**SPOTLIGHT COSTUME HIRE**

We have thousands of costumes!

**OPENING HOURS**  
 MONDAY - FRIDAY  
 10:00am - 4:30pm  
 SATURDAY  
 9:00am - 3:00pm

**a huge range** of unique & unusual accessories to buy or hire!

Hats, masks, jewellery, wigs, stockings, head pieces & much more

Mehron Theatrical & Special Effects makeup

**5539 4700**

e: [mailbox@spotlighttheatre.com.au](mailto:mailbox@spotlighttheatre.com.au)  
[www.spotlight-costume-hire.com](http://www.spotlight-costume-hire.com)

The Spotlight Theatrical Company is a participant in the 2019 Gold Palm Theatre Awards



**Special Thanks to THE GAMING COMMISSION for a substantial GRANT.**

Thank You **CITY OF GOLDCOAST** Council for a substantial Rate donation.

**BRONZE CORPORATE SPONSOR**

**Insurance Brokers**  
 For all your insurance requirements contact Leanne on **(07) 5538 8988**

## CONTACT INFORMATION – SPOTLIGHT COUNCILLORS 2018-2019

**President:** Duncan Sims e: dunlo@ozemail.com.au  
**Vice President:** Erica Graham e: admin@aquashop.com.au  
**Secretary:** Shirley King e: shirley@spotlighttheatre.com.au  
**Treasurer:** Michelle Edwards e: michelle@spotlighttheatre.com.au

### Councillors

Tony Alcock e: spotlighttheatre@icloud.com  
Jonathan Allwood e: helibear56@me.com  
Katie Steuart-Robins e: kgrace091@gmail.com  
Jamie Watt e: j\_j\_watt@hotmail.com

### Production Committee

Duncan Sims, Tony Alcock, Jamie Watt, Aiden Ossovani, Matt Pearson, Shari Ward,  
Emma-June Curik, Clay English

#### Theatre Technical Consultant

Michael Sutton

#### Artistic Adviser

Tony Alcock

#### Stage Mechanist/Workshop Supervisor

Butch Bernet

#### Sound Co-ordinator

Nick Willner

#### Lighting Co-ordinator

Leannie (LJ) Jones

#### Library

Matt Pearson

#### Small Props

TBA

**Insurance** Leanne Binns Insurance matters e: leanne@leaib.com.au

**Fire & Security Contacts** Matt Pearson (1) Jon Allwood (2)

#### Administration Liaison/Group Bookings/Membership Coordinator/ Royalties/Theatre Hire & Usage/Key Dist. & Registration/Gift Coordinator/Volunteer FoH Roster Coordinator/Liaison

Administration W 07 5539 4255

**Publicity** e: publicity@spotlighttheatre.com.au Tony Alcock

**Social Media** Jamie Watt e: j\_j\_watt@hotmail.com

**Costume Hire** Michelle May W 5539 4700 Tony Alcock – **Costume Coordinator** – W 5539 4255

**Youth Theatre Teachers** e: youth@spotlighttheatre.com.au

Hannah Crowther (Music Theatre Teacher & Head Intermediate Drama Teacher),

Matt Pearson (Music Director),

Shelley Grace (Senior Drama Teacher), Taylor Holmes (Assistant Teacher Senior & Intermediate Drama),

Kirstie Sleeman (Head Junior Drama Teacher)

**Youth Theatre Administrator** Val Leftwich e: valleftwich41@gmail.com

**Assistant to Youth Theatre Administrator/Accounts** Kay Hawker e: dkhawker@westnet.com.au

**Sponsorships** Erica Graham e: admin@aquashop.com.au

**Bar Manager** - Duncan Sims e: dunlo@ozemail.com.au

**Charity Night Co-ordinator** Helen Maden e: hpmaden2@gmail.com

**G.C. Theatre Alliance Representative** Joel Beskin / Shirley King

**Webmaster** Michael Thomas e: stc\_webmaster@showbizaustralia.com

**Programmes** Chris Dickinson e: chris@spotlighttheatre.com.au

**Spotlighter Editor** Shirley King e: shirley@spotlighttheatre.com.au

185-187 Ashmore Road Benowa PO Box 8074 GC Mail Centre Q 9726 P: 07 5539 4700

e: mailbox@spotlighttheatre.com.au youth@spotlighttheatre.com.au

Online Booking: www.spotlighttheatre.com.au or Phone 5539 4255

www.spotlight-costume-hire.com

*Thank you to our latest sponsors of Chairs.*

**You can still Sponsor a Chair ONLINE**

**www.spotlighttheatre.com.au**

**or phone 07 5539 4255**



**SPOTLIGHT  
THEATRICAL COMPANY**



**SPONSOR A CHAIR**

**Please contact SPOTLIGHT THEATRE on 07 5539 4255 and they will assist you!**

The Spotlight Theatrical Company wishes to acknowledge and thank you for your donation to sponsor a chair/s. This sponsorship is urgently needed to replace 240 chairs with new, quality, stackable chairs to fill both our main stage theatre and basement theatre. The cost of a chair is \$90.00 and Spotlight will have a plaque created and attached to back of every chair purchased by a sponsor.

As this is considered a donation, it would be tax deductible and a tax receipt will be forwarded to person/business donating.

Should you wish to become part of this sponsorship please complete the following and forward to:

Spotlight Theatrical Company, PO Box 8074, Gold Coast Mail Centre, Qld 9726

Or, personally deliver to:

Costume Hire, Spotlight Theatre, 185-187 Benowa Road, Benowa.

**Details to appear on plaque:** PLEASE PRINT CLEARLY BELOW IN THIS TINTED AREA:

**Send tax receipt to:**

Name: \_\_\_\_\_

Address: \_\_\_\_\_

Phone No: \_\_\_\_\_ Email: \_\_\_\_\_

**Payment Type:** Cash  Cheque  Amex  Visa  Master Card

Card No.	Expiry Date	CCV No.

NAME	CHAIR/S
Adrian Hoffman	2
Amanda Felmingham	1
Audrey Goetz	1
Brian Bradnam	1
Brian Graham	1
Brooke Daley	2
Chris and John Dickinson	1
Deborah Beskin	1
Deborah Bolt	1
Don & Madeline Kibble	1
Doreen Hinton	1
Drew Anthony	2
Duncan & Lorrae Sims	3
Erica Graham	1
Evo 1 Pty Ltd	1
Faye Connelly	1
Fire Up Spit Roast Catering	2
Gerald Moses	1
Hannah Rose Healy	1
Harry and Val Leftwich	2
Heydon Harvey	2
Janette & Michael Webb	2
Jill Downie	1
Joel & Margaret Beskin	2
John Everingham	1
Joseph and Wendy Hawryluk	1
Judith A Dautel	2
Julz Smith	1
Kane McCarthy	2
Karyn Lively	1
Katherine Ogge	1
L. Kealton	1
Lisa Story	2
Lynn Benson	1
Malcolm Davidson	1
Marilyn Culell	2
Marjorie Adams	1
Maureen Stevenson	4
Mrs A Watt	1
Mrs B. Elliott	1
Mrs P Riek	1
Mrs Shirlie Foxover	2
Patricia Drew	2
Pauline Davies	1
Quota International Of Gold Coast	4
Robert Deatherage	1
Robyn Collins	1
Russell & Elizabeth White	1
Sandy Ackerman	1
Sewroo Products	1
Shirley King	2
Spotlight Golden Girls	1
Stella Simpson	1
Sue Davies	1
Surfers Paradise Chiropractic Health & Welfare Centre	2
Tanele Storm Graham	1
Terry Kalaf	1
Trish Pederson	11
William Collins	1

*To all our Sponsors your contribution is greatly appreciated.*