

Official Newsletter of the
SPOTLIGHT THEATRICAL COMPANY

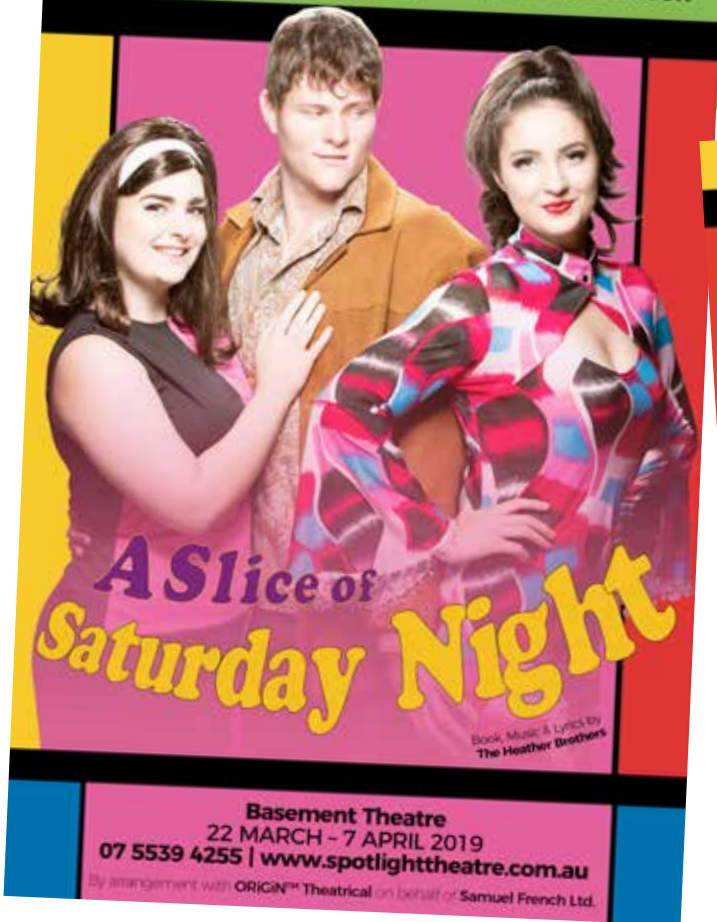
*Fostering an outlet for creative youth and community,
 while seeking to produce vibrant, quality entertainment
 that enriches, engages and educates.*



NOW SHOWING

The SPOTLIGHTER

APRIL 2019



Cover pics courtesy Vargo Studios



Spotlight Theatre is a foundation
 member of the Gold Coast
 Theatre Alliance.





The Spotlight Theatrical Company
proudly presents

A Slice of Saturday Night



Book, Music and Lyrics
by
The Heather Brothers

Director/Musical Director
STEVEN DAYS
Choreographer
STEWART MATTHEWS
Vocal Assistant
MATT PEARSON



BY ARRANGEMENT WITH ORIGIN™ THEATRICAL
ON BEHALF OF SAMUEL FRENCH LTD

Basement Theatre
22 MARCH - 7 APRIL 2019
BOOKINGS 07 5539 4255
www.spotlighttheatre.com.au



PHOTOS
VARGO
STUDIOS



VARGO STUDIOS
www.vargostudios.com

REVIEW COURTESY STAGE WHISPERS REVIEWER, ROGER MCKENZIE

A Slice of Saturday Night

By The Heather Bros.

Director / Musical Director: Steven Days

March 22nd to April 7th

A Slice of Saturday Night could be called 'The Babyboomers Rite of Passage'. The story unravels just what one has to endure to survive Saturday Night at the Club A-Go-Go.

The cast includes Stephen Morris – Eric "Rubber Legs" Devene, Mitchell Walsh – Gary, Mike Capri – Rick, Nathan French – Eddie, Brooke Edwards – Bridget, Bonnie Woods – Sharon, Holly Leeson – Sue and Talitha Glazbrook – Penny.

As the Basement Theatre is a compact venue, the sound of the four piece band

came from an adjacent dressing room and complemented the performers, adding to the 60's feel. The songs were unknown but the beat caught the swinging sixties vibe.

A simple set with great lighting and sound brought the Club A Go-Go alive as the Babyboomers went through the well worn rituals of racing hormones in the attempt to score.

Steven Day's production had pace and humor and the audience fell hook, line and sinker for the corny one liners and the ploys used to triumph in pursuing the one of your dreams.

A fun night out for all, not just the Babyboomers.

Roger McKenzie
Stage Whispers



Spotlight on Youth Theatre



TEACHING FRATERNITY & ADMINISTRATORS:

HANNAH CROWTHER (*Int. Drama & Snr. Music Theatre Teacher*)

MATT PEARSON (*Music Director*)

SHELLEY GRACE (*Head Teacher Senior Drama*)

TAYLOR HOLMES (*Assistant Teacher Senior & Intermediate Drama*)

KIRSTIE SLEEMAN (*Head Teacher Junior Drama*)

VAL LEFTWICH (*YT Administrator*)

KAY HAWKER (*YT Accountant*)

Good news this month, we have now upgraded the Youth Theatre on our web site. We now have Teachers profiles, Term dates, Productions dates and much more so take time to have a look at it. Thank you webmaster, Michael Thomas.

The Senior Drama classes on Monday are almost full and Shelley and Taylor are working hard with the students. Their production is early September and I am sure the teachers are already working on the play in their heads. Term two is usually the term when auditions are held, but everyone in the class will get a part.

Matt and Hannah once again head up the Music Theatre classes and these are now completely full. Showcase is going to be a really exciting event and we will see for the first time the Young Adult Music Theatre class perform **Cabaret** on the 14th and 15th of June. It's not too late to join this class we still have places available, just give me a call.

Our Intermediate Drama classes headed up by Hannah and Taylor, are doing really well and the students seem to be really enjoying the challenges put out by the teachers.

We received exciting news this week one of our Intermediate students **Zali Engel-Bowe** (right) received the highest grade in Queensland for her grade two AMEB drama exam. Well done Zali! I hope we helped you to attain that high standard. You put in a lot of hard work congratulations.

Miss Kirstie is working hard with her junior students assisted by Miss Hannah. Every Saturday the students come in full of enthusiasm and seem to be really enjoying the experience.

For those who couldn't get a tee shirt to fit them, I have now received more sizes, so if you could not get fitted before you probably can now, just call into the Costume Hire shop.

Just a reminder, although Kay has already sent out an email there will be classes on Saturday the 6th April, although school breaks up on the 5th. Term 2 classes will commence again week beginning the 23rd April for all classes.

I am pleased to say my foot surgery was completely successful and a big thanks to Kay for helping me through the last two months.

Next term we will be taking class photos and some more photos to put on to the web site for Youth Theatre. For those of you that haven't signed the photo permission form can you please make sure this is completed and returned to either the teachers, myself or Kay.

Kind regards,

Valerie Leftwich – Administrator Spotlight Youth Theatre



THE SPOTLIGHT THEATRICAL COMPANY

YOUTH THEATRE FRATERNITY

For over 38 years Spotlight Youth Theatre has been catering for the creative youth of the Gold Coast. Spotlight Youth Theatre has classes accommodating students from grade 2 – 12 and a Young Adult class for students over 18 years of age. The teachers are of an extremely high standard, earning Spotlight Youth Theatre an outstanding reputation in the Performing Arts.

Specialisations in both Music Theatre and Drama are offered, with classes grouped into four streams: Junior, Intermediate, Senior and Young Adult. Showcase public performances are staged in both the Basement Theatre and Halpin Auditorium during the second half of the year.



Hannah Crowther

Head Teacher - Intermediate Drama

Hannah made her professional theatre debut in ***Oklahoma!*** and then as Rumpoleteazer in ***CATS*** for Harvest Rain Theatre Company. In 2017 Hannah choreographed ***The Producers*** for Savoyards Musical Society and in 2013 she earned a Gold Coast Theatre Award for choreographing the original musical ***Billy Buckett*** (Beenleigh Theatre Company). For the ***24Hour Musical Project*** she worked as Dance Captain in 2016 and then as Assistant Choreographer and Dance Captain in 2017.

Hannah toured Australia with Camp Quality as part of their education program, anti-bullying puppet shows ***Inside Out*** and ***The Way You Look At It***. She has also performed internationally with **The Hong Kong Oratorio Society** and toured to **California Adventureland, Knotts Berry Farm** and **Disneyland**. She also performs weekly as vocal partner, vocal arranger and dance director with **DJR Productions**. Throughout her life, Hannah has completed various dance, drama and musical theatre exams, most notably having achieved a Diploma in Musical Theatre with Distinction (Trinity College of London), Grade 1 Theatrical Examination (Commonwealth Society of Teachers of Dancing), and Intermediate Ballet (Royal Academy of Dancing).



Shelley Grace

Senior Drama Teacher

Shelley likes to joke that she doesn't do drama, she is drama, and having made her theatre debut at the age of five she isn't far off the mark. Having spent the majority of her life performing Shelley has appeared in many productions; from school to community to professional theatre companies on the North Coast of NSW including **NORPA**. She has staged countless community, youth and adult theatrical and musical productions through the **St Mary's Players, ANT Group and LAMS** Theatre companies in the Northern Rivers of NSW. Her more notable

appearances include Anmeris in Elton John and Tim Rice's ***Aida***, Galinda in ***Wicked, Chicago, Stops Along The Way*** and ***Romeo And Juliet***.

With a vast array of courses behind her, including a Bachelor of Arts in Media & Communications, Theatre and Film Production, qualifications with the British Ballet Organisation and attendance at the American Academy of Dramatic Arts, Shelley is also a qualified Drama teacher with NSW department of Education and Education Queensland.

Having gained experience in acting, writing, directing, choreography and producing at all levels, Shelley is looking forward to the challenges, experiences and opportunities Spotlight Theatre and its Youth Drama Program will provide her. Shelley aims to teach, learn from and engage the students in all elements of Drama from production to performance and everything in between.



Taylor Holmes

Assistant Senior Drama Teacher & Assistant Intermediate Drama Teacher

Taylor is a passionate Musical Director, drama teacher, instrumental teacher, trombonist and onstage performer who is currently completing her Bachelor of Arts in Drama and Music at the University of Queensland. Her other credentials include a Certificate of Continuing Education in Musical Theatre at the Griffith Conservatorium of Music (2015) and AMEB Certificate of Performance Honours for vocal (2014).

She is a keen onstage performer in multiple disciplines including musical theatre, theatre, trombone, and voice. Her most recent Musical Direction credits include: **Avenue Q** (Brisbane Arts), **Blood Brothers** (Javeenbah), **A Little Princess** (Beenleigh Theatre Group) and she has many more lined up for this year. As well as Musical Directing, some of her most recent performing credits include Ensemble in QMT'S 2017 production of **Cinderella**, Angel/Reporter in QMT'S 2016 production of **Jesus Christ Superstar** and numerous roles in her Conservatorium showcases in 2015, which were a compilation of songs from well-known Broadway musicals.



Matt Pearson

Music Director

A long time Spotlight Music Director, Matt has worked on numerous productions in varying roles since 2005. He started as a musician for HOTA (formerly The Gold Coast Arts Centre) productions of **Annie**, **Hair**, **Broadway In Concert**, **All Shook Up** and **The Boy From Oz**, before making the move to Spotlight Theatre in 2008. In 2010, Matt was the Conductor for the Australian Premiere of **Curtains: The Musical Comedy Whodunnit**, and in 2013 was Associate Music Director and Conductor on the Queensland Amateur Premiere of **The Phantom Of The Opera**. In 2012, Matt

won the inaugural "Best Vocal Director" award at the Gold Coast Theatre Awards for his work on Spotlight's **Hairspray**, and again won this award in 2014 for his work on Spotlight's **Sweeney Todd: The Demon Barber Of Fleet Street**.

As Music Director, Matt consistently worked on critically acclaimed productions including 2015's new production of **The Boy From Oz**, 2017's Gold Coast revival of **Les Miserables**, and 2018's concert oratorio production of Monty Python's **He's Not The Messiah, He's A Very Naughty Boy** featuring a 35 piece orchestra (including live Bagpipes) and a 30 piece choir. In 2017, Matt was not only Music Director, but also Vocal Arranger and Orchestrator for Spotlight's production of **Boyband: The Musical**. Since 2014, Matt has been the Music Director for Spotlight Youth Theatre, and since then has seen a number of his students go on to study and graduate from the Queensland Conservatorium, VCA, WAAPA, and NIDA, and are now continually working professionally in the field.

**SPOTLIGHT THEATRICAL COMPANY REQUIRES A DEDICATED VOLUNTEER
TO LOOK AFTER STAGE PROPERTIES.
CAN YOU HELP?**



Kirstie Sleeman

Junior Drama Teacher

A new member of the Spotlight family, Kirstie has had a passion for all things drama since starting dancing and demi character as a child in New Zealand.

After attaining a Creative Arts Degree from Griffith University, followed by a Master of Arts from Bond University, she completed a Diploma of Education at Griffith University, and from 2006 to 2010 she taught 6-17 year-olds the "Acting Out Loud" Stage, Film and TV program at Bright Stars Academy.

In addition to looking forward to a wonderful year full of fun and fantastic drama at Spotlight, Kirstie is currently teaching Drama and the Arts in schools across the Gold Coast and Brisbane.

2019

PERFORMANCE SCHEDULE

**Young Adult Cabaret
14th and 15th June**

**Music Theatre Showcase
Intermediate and Senior Music Theatre
21st, 22nd and 23rd June**

**Senior Drama
6th and 7th September**

**Intermediate Drama
18th, 19th and 20th October**

**Junior Drama
29th, 30th November and 1st December**

**Intermediate & Senior Music Theatre
(Tuesday 4pm, Wednesday 5:30pm classes)
End of Year Showcase
5th, 6th and 7th December**

**Senior Music Theatre Production
12th, 13th and 14th December**

**Young Adults Production
17th and 18th December**

**Joel Beskin's
'Theatre
Roundup'**

is on Air,
Tuesday every week.

Tune in to 4CRB 89.3FM
between
2.35pm and 3pm
for Community
Theatre News

**Thank
You**

**CITY OF
GOLDCOAST™**

*Council
for a substantial Rate donation.*

NEW CLASSES!!! PRODUCTION DESIGN

SPOTLIGHT THEATRICAL COMPANY



YOUTH THEATRE

Spotlight Theatrical Company is the Gold Coast's busiest community theatre. With two completely active theatres on premises, we boast a playbill of over 15 productions per year ranging from pantomime, to plays, musicals and a number of youth theatre productions.

As well as 2 active theatres, Spotlight is also home to an ever-expanding Youth Theatre Program, offering programs in Drama and Music Theatre to students aged 7-23. In Term 2 this year, the Youth Theatre Program will again expand, to offer a brand new class, catering to the behind the scenes work of the theatre. This new class will provide students with knowledge and experience in the areas of Sound Design & Operation, Lighting Design & Operation, Stage Management, Workplace Health & Safety Procedures, Audio-Visual Design & Operation, and Set Design & Construction.



Class Details:

- Commencement Date: Friday 26th April, 2019
- Class Time: Fridays 4-6pm
- Location: Spotlight Theatre: Halpin Auditorium
- Cost: \$250.00 Per Term (we follow the Education Queensland Term dates)
- Age: 15 - 23



For More Information, Contact:

Val Leftwich:
Youth Theatre Administrator
youth@spotlighttheatre.com.au

Matt Pearson
Class Facilitator
mailbox@spotlighttheatre.com.au
(07) 5539 4255

PRESIDENT'S REPORT

The past months have been very busy with much needed maintenance being done around the theatre complex. With so much happening at our theatre it is difficult to gain access to areas to get all the necessary jobs done, but we have been forging ahead and achieving much. Thank you to all those who have helped and given so much time.

Our LED signage is currently in transit and we hope to have it installed by ***Catch Me If You Can***.

The extra matinee worked well for ***The Little Mermaid***. Thank you to the Creative Team and volunteers for all the effort put in to make the production a success.

A Slice of Saturday Night is currently showing in the Basement and has been well received by audience members and reviewers (see page 3). It is a fun show with rollicking "good feel, sixties type" music that you will enjoy immensely.

Catch Me If You Can cast has been selected and went live with a facebook announcement and video snippet to entice future audience members. Director Clay English is working with our Stage Mechanist & Workshop Supervisor, Butch Bernet to once again bring something special for the staging of this mammoth and exciting production.

Auditions have been held for our next Basement pantomime ***Alice in Wonderland*** and the Cast will be announced in the near future. Keep checking our website www.spotlighttheatre.com.au and facebook page www.facebook.com/spotlighttheatricalcompany to keep up to date with what is happening at our theatre.

Director, Tony Alcock is currently organising his auditions for ***Ladies in Black*** and these will also be announced on the websites as soon as they are available. Tony is still on sick leave at this time but is improving slowly and has been keeping himself occupied with directorial ideas for ***Ladies in Black***. We wish him well and look forward to him directing this popular musical production which stages in August.

June is a busy time for **Youth Theatre** with the first performance of our new Young Adults ***Cabaret*** and then later Senior Music Theatre ***Showcase***. Note the details of our new class for **Production Design** commencing 26th April on page 8

On a serious note, I need to remind Directors and performers that all cast members need to be Members of Spotlight. As a Community Theatre and Not for Profit Organisation this is of utmost importance. This needs to be stressed at Audition time. PLEASE CHECK THAT YOUR MEMBERSHIP IS CURRENT.

I look forward to catching up with you at the theatre soon, so until then look after yourselves and each other and remember a smile is more infectious than the 'flu, so keep smiling and spread.

Best Regards,

Duncan Sims



Special Thanks to
THE GAMING COMMISSION
for a substantial GRANT.

Memberships 2019

IT IS IMPERATIVE for our *Not for Profit Status*
THAT MEMBERSHIPS BE KEPT UP TO DATE.

A NOTE TO ALL PERFORMERS IN SPOTLIGHT PRODUCTIONS.

IT IS A REQUIREMENT THAT YOU BECOME A MEMBER
OF THE SPOTLIGHT THEATRICAL COMPANY.

Memberships commence January 1 to December 31.
(If you joined on or after November 1st
your Membership is current for the following year.)

PLEASE CHECK TO SEE THAT YOUR MEMBERSHIP IS CURRENT.
ANNUAL FEE IS \$10 PER ANNUM.

SEASON TICKETS *Great Bargains!*

Get in early! CONTACT BOOKINGS 07 5539 4255. * Special Conditions apply.



The image shows a template for a Season Ticket certificate. On the left, there is a blue and white graphic celebrating the 60th anniversary of the Spotlight Theatrical Company, with the text 'Celebrating 60 years of Spotlight Theatrical Company Diamond Anniversary, 2015'. To the right, a blue box contains the text 'Season Ticket'. Below this, the company name 'SPOTLIGHT THEATRICAL COMPANY' is printed above an image of two theatrical masks. The certificate includes a section for 'This certificate entitles :-' followed by a line for 'To : _____ Shows' and six empty boxes. Below that, it says 'Valid: From _____ To: _____' and 'NOT VALID: OPENING OR CLOSING NIGHT PERFORMANCES'. At the bottom, there are fields for 'Not Transferable: Not Redeemable for Cash Bookings Essential Authorised by : _____', 'Transaction ID: _____', and contact information: '185 Ashmore Road BENOWA QLD 4217 Phone: 5539 4255 email: mailbox@spotlighttheatre.com.au'.



Our Welcome form for NEW and renewing MEMBERSHIP

(Calendar year Jan 1 to Dec 31)

- Where talent, skills and interests merge

What sort of involvement are you seeking?

I/we wish to apply for:

- NEW membership (adult) \$10
- RENEWAL (Adult) \$10
- NEW (Youth Under 18yrs) \$5
- RENEWAL (Youth U 18yrs) \$5

I would also like to be listed as a

- HAT and/or PET

Office use only:

Received

Entered in database

Code issued

Date / processed by

.....

Year of membership.....

The Spotlight Theatrical Co is among the leading amateur Theatrical producers in Australia. It caters for adult and youth theatre and especially popular Music Theatre. It is well equipped and complies with all Fire, Workplace Health and Safety requirements. But to do this it needs **VOLUNTEERS** aplenty to service its **Audience membership & patrons.**

You may also choose to volunteer flexible time as a -

SPOTLIGHT 'PET'

PET denotes PRODUCTION ENHANCEMENT TEAM and includes, for example, backstage crew, scenery design, art and or construction, property making or acquiring, costume design and or construction, sound or lighting design or operation, makeup and hair, and photography.

or a

SPOTLIGHT 'HAT'

HAT denotes HOSPITALITY ASSISTANCE TEAM. You can choose to be welcoming Front of House and or Bar assistance during scheduled performances.

This is a family-friendly form: All family at one address!

NAME/status.....

Phones: Home.....Mob.....

NAME/status.....Mob.....

NAME/status.....Mob.....

NAME/status.....Mob.....

NAME/status.....Mob.....

POSTAL ADDRESS

.....

POSTCODE

Email

I submit the total sum of \$.....

Signature:

- MEMBER BENEFITS INCLUDE -
- An exclusive code for online offers
- "The Spotlighter" monthly E- Newsletter
- Privilege for theatre tickets
- Eligibility for special offers
- Discount on party costume hire
- Promotional events
- Social events
- Some indemnity when working in or on a Production
- Renew online (from 2014)

Location! Location! Location!



Spotlight Theatre Complex comprises of two highly equipped theatres, Green room, a costume-hire & retail outlet, 'Youth Theatre' facilities, bookings centre, store-rooms and workshop facility. On-premises limited parking.

All activities situated conveniently in the heart of the Gold Coast.

Mail to Spotlight MEMBERSHIP,
PO Box 8074 GCMC Q. 9726 or visit

The Spotlight Theatrical Company,
185-187 Ashmore Road, Benowa, Qld. 4217
Ph. Shop 07 5539 4700
Ph. Theatre/Bookings 07 5539 4255

Copy of the Constitution and other information is available from our website www.spotlighttheatre.com.au
Follow us on Facebook at [spotlighttheatricalcompany](https://www.facebook.com/spotlighttheatricalcompany)

Public Liability Insurance held.

CLAY ENGLISH INTRODUCED HIS *CATCH ME IF YOU CAN* CAST IN A LIVE FACEBOOK ANNOUNCEMENT ON TUESDAY 12 MARCH WITH AN EXCLUSIVE SNEAK PEAK AT THESE INCREDIBLE PERFORMERS.



JACK HARBOUR

AS

FRANK JNR



CHRIS CATHERWOOD

AS

CARL HANRATTY

A FAST ROLICKING MUSICAL *CATCH ME IF YOU CAN* TELLS THE TALE OF AN INGENIOUS YET LONELY BOY LOOKING FOR HIS PLACE IN THE WORLD. IT IS BASED ON A TRUE STORY.



SEEKING FAME AND FORTUNE, PRECOCIOUS TEENAGER FRANK ABAGNALE JNR. RUNS AWAY FROM HOME WITH NOTHING MORE THAN HIS BOYISH CHARM, A BIG IMAGINATION AND MILLIONS OF DOLLARS IN FORGED CHEQUES, THAT IS UNTIL FBI AGENT, CARL HANRATTY COMES ON THE SCENE.



STEVEN DAYS
AS
ROGER

DELLA DAYS
AS
CAROL



ALAN BECK
ENSEMBLE



BECKY MORGAN
ENSEMBLE



CHLOE SMITH
ENSEMBLE



CLAY CARLAW
ENSEMBLE



GEORGIA BECK
ENSEMBLE



MIKAELA KIMBERLEY
ENSEMBLE



NIAMH BOURKE
ENSEMBLE



PHILLIP MAAS
ENSEMBLE



RACHEL LOVE
ENSEMBLE



SAMANTHA PRICE
ENSEMBLE



TIAHNI WILTON
ENSEMBLE



TYMYKA WINES
ENSEMBLE

Thank You

CITY OF
GOLDCOAST.

for Divisional funding to the value of \$2000
to update computers and office equipment.

Brought to you by the 2018 blockbuster
WE WILL ROCK YOU Creative Team,
Director/Choreographer CLAY ENGLISH and
Musical Director SHARI WARD.

A SPLASHY MUSICAL COMEDY BASED ON THE HIGH-FLYING
ADVENTURES OF A GLOBETROTTING CON ARTIST.



THE SPOTLIGHT THEATRICAL COMPANY
PROUDLY PRESENTS

CATCH ME



IF YOU CAN

THE MUSICAL

BASED ON THE DREAMWORKS MOTION PICTURE

BOOK BY
**TERRENCE
MCNALLY**

MUSIC BY
**MARC
SHAIMAN**

LYRICS BY
**SCOTT
WITTMAN & MARC
SHAIMAN**

DIRECTED & CHOREOGRAPHED BY
CLAY ENGLISH

MUSICAL DIRECTION BY
SHARI WARD

HALPIN AUDITORIUM

17 MAY - 8 JUNE 2019

BOOK & PAY

(07) 5539 4255

www.spotlighttheatre.com.au

Licensed exclusively by **Music Theatre International (Australasia)**.
All performance materials supplied by **Hal Leonard Australia**.

PLAYBILL SUBMISSIONS FOR 2020

Directors please present your submissions for
MUSICALS, PANTOMIMES and PLAYS
or other exciting suggestions
outlining your ideas for presentation during 2020.

The Halpin Auditorium

- **Musicals**

Mid February/March

Latter part of May/June

Late July/August

Late October/November

Basement Theatre

- **Pantos/Plays etc.**

Early January

Early April

Late June/July

Mid September/October

Submissions close 30th June 2019

Please present to: Production Committee

The Spotlight Theatrical Company

185-187 Ashmore Road, Benowa

or mail to: Production Committee

The Spotlight Theatrical Company,

PO Box 8074 Gold Coast Mail Centre Q 9726

Spotlight Theatre
Artist's Review Seniors
known as

STARS

Noni Buckland – STARS Liaison

After several weeks of rehearsals we completed a full dress on Monday 4th of March, in the Basement Theatre. Our opening performance for Currumbin Happy Group was the next day, Tuesday 5th March.



We have now completed shows at the following venues:-

- Currumbin Happy Group - Elanora
- Ozcare – Runaway Bay
- Bupa – Banora Point
- CWA – Mermaid Beach

We have some great new numbers and costumes to compliment our show which was greatly appreciated by our audiences.

I have included two photos from our current show. One of our opening number **Side by Side** with (L to R) Marlene, Lyn, Marilyn, myself, Kerry and Samantha. The second photo is of Samantha, Lyn and Kerry in their **Chicago** number. That's all from the **STARS** and now back to the boards.

Noni

ALICE in Wonderland has been cast and is now in rehearsal.

A CAST ANNOUNCEMENT will be made soon and will be posted to our website and Facebook.

THE SPOTLIGHT THEATRICAL COMPANY PRESENTS

ALICE

IN Wonderland

CHOREOGRAPHER
GEORGIA BECK

WRITER/DIRECTOR
NATHAN FRENCH

MUSICAL DIRECTOR
MARTINA FRENCH

JULY 3-13, 2019

BASEMENT THEATRE
2 SHOWS DAILY
10:30AM & 2PM

BOOK & PAY
07 5539 4255
WWW.SPOTLIGHTTHEATRE.COM.AU



AUDITIONS – *Ladies in Black*

Audition information will be posted to the Spotlight Website: www.spotlighttheatre.com.au
and Facebook site: www.facebook.com/spotlighttheatricalcompany in the near future.

THE SPOTLIGHT THEATRICAL COMPANY PROUDLY PRESENTS

– THE SPARKLING NEW MUSICAL –

AUG 2-24, 2019
HALPIN AUDITORIUM

BOOK & PAY
07 5539 4255
WWW.SPOTLIGHTTHEATRE.COM.AU

DIRECTOR **TONY ALCOCK**
CHOREOGRAPHER **TIAHNI WILTON** MUSICAL DIRECTOR **JULIE WHITING**
BOOK BY **CAROLYN BURNS** MUSIC & LYRICS BY **TIM FINN**

ADAPTED FROM THE BOOK *THE WOMEN IN BLACK* BY
MADELEINE ST JOHN



BY ARRANGEMENT WITH DAVID SPICER PRODUCTIONS WWW.DAVIDSPICER.COM.AU

SEASON TICKETS Great Bargains!

Get in early! CONTACT BOOKINGS 07 5539 4255. * Special Conditions apply.



Season Ticket

SPOTLIGHT THEATRICAL COMPANY



This certificate entitles :-

To : _____ Shows

Valid: From _____ To: _____

NOT VALID: OPENING OR CLOSING NIGHT PERFORMANCES

185 Ashmore Road BENOWA QLD 4217 Phone: 5539 4255

Not Transferable: Not Redeemable for Cash
Bookings Essential
Authorised by : _____

Transaction ID: _____

email: mailbox@spotlighttheatre.com.au

The Spotlight Theatrical Company

"Fostering an outlet for creative youth and community, while seeking to produce vibrant, quality entertainment that enriches, engages and educates."

Rev
4

2019 PLAYBILL

Spark & the Crystal Crusade	Basement	9 - 19 January
The Little Mermaid	Halpin	8 February - 2 March
A Slice of Saturday Night	Basement	22 March - 7 April
Catch Me If You Can	Halpin	17 May - 8 June
Young Adult Cabaret	Halpin	14, 15 June
Music Theatre Showcase	Halpin	21, 22, 23 June
Alice in Wonderland	Basement	3 - 13 July
Ladies in Black	Halpin	2 - 24 August
Senior Drama	Halpin	6, 7 September
Kelly	Basement	20 Sep - 5 October
Intermediate Drama	Basement	18, 19, 20 October
Kinky Boots	Halpin	1 - 23 November
Junior Drama	Basement	29, 30 Nov, 1 Dec
Int. & Snr. Music Theatre		
End of Year Showcase	Halpin	5, 6, 7 December
Snr. Music Theatre Production	Halpin	12, 13, 14 December
Young Adult Production	Halpin	17, 18 December
Spotlight On Christmas	Halpin	20, 21 December

Disclaimer: Subject to change without notice.



TICKET PRICING & BOOKINGS:
www.spotlighttheatre.com.au p. (07) 5539 4255

185-187 Ashmore Rd, Benowa Qld
facebook.com/SpotlightTheatricalCompany

Spotlight Theatre is a Foundation Member of the Gold Coast Theatre Alliance

TICKET PRICING

The Halpin Auditorium

**Opening Night \$37, Adults \$34, Concession \$30,
Member \$29, Child (under 16) \$25,
Group 10+ \$31**

Basement Theatre Plays

**Opening Night \$37, Adults \$32, Concession \$29,
Member \$27, Child (under 16) \$25,
Group 10+ \$29**

(Note: Musicals as per The Halpin Auditorium)

PANTOMIMES: All tickets \$16, Group of 10+ \$15.

NOTE

**TICKETS WILL ONLY BE HELD FOR 72 HOURS
OR 3 BUSINESS DAYS.**

BRONZE CORPORATE SPONSOR



**Insurance Brokers
For all your insurance
requirements contact Leanne
on (07) 5538 8988**

The Spotlight Theatrical Company Acknowledges and Thanks the

**CITY OF
GOLDCOAST™**

Division 7 and Councillor Gary Baildon

for the Grant Donation to our Community Theatre.

HELP YOUR THEATRE BY SUPPORTING OUR LOCAL SPONSORS



Grill'd Benowa Gardens
- a local Sponsor

LOCAL MATTERS

GRILLD.COM.AU/LOCALMATTERS ~ #GRILLD



Spotlighter Deadline

19th of each month

PLEASE FORWARD REPORTS,

ARTICLES AND PICS TO

shirley@spotlighttheatre.com.au



(formerly Gold Coast Area Theatre Awards)

The Spotlight Theatrical Company
is a participant in the
2019 Gold Palm Theatre Awards



For an update on all current
and scheduled plays and
shows

by Gold Coast and Tweed Shire
member groups visit
the website:

<http://www.goldcoasttheatre.com.au>

SPOTLIGHT COSTUME HIRE

We have
thousands
of costumes!

OPENING HOURS

MONDAY - FRIDAY
10:00am - 4:30pm

SATURDAY
9:00am - 3:00pm



a huge
range

of
unusual accessories
to buy or hire!

Hats, masks,
jewellery, wigs,
stockings, head
pieces & much
more

Mehron
Theatrical
& Special
Effects
makeup

5539 4700

e: costume-hire@spotlighttheatre.com.au
www.spotlight-costume-hire.com

Thank you to our latest sponsors of Chairs.

You can still Sponsor a Chair ONLINE

www.spotlighttheatre.com.au

or phone 07 5539 4255



**SPOTLIGHT
THEATRICAL COMPANY**



SPONSOR A CHAIR

Please contact SPOTLIGHT THEATRE on 07 5539 4255 and they will assist you!

The Spotlight Theatrical Company wishes to acknowledge and thank you for your donation to sponsor a chair/s. This sponsorship is urgently needed to replace 240 chairs with new, quality, stackable chairs to fill both our main stage theatre and basement theatre. The cost of a chair is \$90.00 and Spotlight will have a plaque created and attached to back of every chair purchased by a sponsor.

As this is considered a donation, it would be tax deductible and a tax receipt will be forwarded to person/business donating.

Should you wish to become part of this sponsorship please complete the following and forward to:

Spotlight Theatrical Company, PO Box 8074, Gold Coast Mail Centre, Qld 9726

Or, personally deliver to:

Costume Hire, Spotlight Theatre, 185-187 Benowa Road, Benowa.

Details to appear on plaque: PLEASE PRINT CLEARLY BELOW IN THIS TINTED AREA:

Send tax receipt to:

Name: _____

Address: _____

Phone No: _____ Email: _____

Payment Type: Cash Cheque Amex Visa Master Card

Card No.	Expiry Date	CCV No.

To all our Sponsors your contribution is greatly appreciated.

NAME	Chair/s
Spotlight Golden Girls	1
Marilyn Culell	2
Harry and Val Leftwich	2
Judith A Dautel	1
Chris and John Dickinson	1
Joel & Margaret Beskin	2
Joseph and Wendy Hawryluk	1
Drew Anthony	1
Quota International Of Gold Coast	4
Tanele Storm Graham	1
Brian Graham	1
Erica Graham	1
Terry Kalaf	1
Pauline Davies	1
Marjorie Adams	1
William Collins	1
Robyn Collins	1
Mrs B. Elliott	1
Shirley King	2
Deborah Bolt	1
Doreen Hinton	1
Malcolm Davidson	1
Patricia Drew	2
Robert Deatherage	1
Trish Pederson	11
Sewroo Products	1
Karyn Lively	1
Russell & Elizabeth White	1
Katherine Ogge	1
Julz Smith	1
Judith A Dautel	1
L. Kealton	1
Mrs A Watt	1
Mrs Shirlee Foxover	2
Mrs P Riek	1
Lynn Benson	1
Maureen Stevenson	4
Jill Downie	1
John Everingham	1
Evo 1 Pty Ltd	1
Gerald Moses	1
Heydon Harvey	2
Sue Davies	1
Brooke Daley	2
Janette & Michael Webb	2
Stella Simpson	1
Amanda Felmingham	1
Adrian Hoffman	2
Audrey Goetz	1
Sandy Ackerman	1
Surfers Paradise Chiropractic Health & Welfare Centre	2
Lisa Story	2
Drew Anthony	1
Kane McCarthy	2
Deborah Beskin	1
Don & Madeline Kibble	1
Hannah Rose Healy	1
Duncan & Lorrae Sims	2
Faye Connelly	1
Brian Bradnam	1
Fire Up Spit Roast Catering	2

CONTACT INFORMATION – SPOTLIGHT COUNCILLORS 2017-2018

President: Duncan Sims e: dunlo@ozemail.com.au
Vice President: Erica Graham e: admin@aquashop.com.au
Secretary: Shirley King e: shirley@spotlighttheatre.com.au
Treasurer: Michelle Edwards e: michelle@spotlighttheatre.com.au

Councillors

Tony Alcock e: mailbox@spotlighttheatre.com.au
Jonathan Allwood e: helibear56@me.com
Katie Steuart-Robins e: kgrace091@gmail.com
Jamie Watt e: j_j_watt@hotmail.com

Production Committee

Duncan Sims, Tony Alcock, Jamie Watt, Aiden Ossovani, Matt Pearson, Shari Ward,
Emma-June Curik, Clay English

Theatre Technical Consultant Michael Sutton
Stage Mechanist/Workshop Supervisor Butch Bernet
Sound Co-ordinator Nick Willner
Lighting Co-ordinator Leonnie (LJ) Jones

Library Matt Pearson e: mattp190391@gmail.com

Small Props TBA

Insurance Leanne Binns Insurance matters e: leanne@leaib.com.au

Fire & Security Contacts Matt Pearson (1) Jon Allwood (2)

Administration Liaison/Group Bookings/Membership Coordinator/ Royalties/Theatre Hire & Usage/Key Dist. & Registration/Gift Coordinator/Volunteer FoH Roster Coordinator/Liaison

Administration W 07 5539 4255

Publicity e: publicity@spotlighttheatre.com.au Tony Alcock

Social Media Jamie Watt e: j_j_watt@hotmail.com

Costume Hire Michelle May W 5539 4700 Tony Alcock – **Costume Coordinator** – W 5539 4255

Youth Theatre Teachers e: youth@spotlighttheatre.com.au

Hannah Crowther (Music Theatre Teacher & Head Intermediate Drama Teacher),

Matt Pearson (Music Director),

Shelley Grace (Senior Drama Teacher), Taylor Holmes (Assistant Teacher Senior & Intermediate Drama),

Kirstie Sleeman (Head Junior Drama Teacher)

Youth Theatre Administrator Val Leftwich e: valleftwich41@gmail.com

Assistant to Youth Theatre Administrator/Accounts Kay Hawker e: dkhawker@westnet.com.au

Sponsorships Erica Graham e: admin@aquashop.com.au

Bar Manager - Duncan Sims e: dunlo@ozemail.com.au

Charity Night Co-ordinator Helen Maden e: hpmaden2@gmail.com

G.C. Theatre Alliance Representative Joel Beskin / Shirley King

Webmaster Michael Thomas e: stc_webmaster@showbizaustralia.com

Programmes Chris Dickinson e: chris@spotlighttheatre.com.au

Spotlighter Editor Shirley King e: shirley@spotlighttheatre.com.au

185-187 Ashmore Road Benowa PO Box 8074 GC Mail Centre Q 9726 P: 07 5539 4700

e: mailbox@spotlighttheatre.com.au youth@spotlighttheatre.com.au

Online Booking: www.spotlighttheatre.com.au or Phone 5539 4255

www.spotlight-costume-hire.com