

Official Newsletter of the  
**SPOTLIGHT THEATRICAL COMPANY**

*Fostering an outlet for creative youth and community, while seeking to produce vibrant, quality entertainment that enriches, engages and educates.*

JUNE 2018

**INSIDE:**

- *2019 Playbill Submissions Close June 30th 2018*
- *President's Report*
- *Youth Theatre Information*
- *Heathers the Musical*
- *Jack and the Beanstalk - Pantomime*
- *Audition information: Not The Messiah (He's a Naught Boy). The Marvellous Wonderettes, We Will Rock You. Check [www.spotlighttheatre.com.au](http://www.spotlighttheatre.com.au) for latest information*

ONLINE  
ANYTIME

SPOTLIGHTER

**HEATHERS**  
*The Musical*

**MAY 25 –**

**JUNE 16**



*Spotlight Theatre is a  
foundation member of the  
Gold Coast Theatre Alliance.*



# PLAYBILL SUBMISSIONS REQUIRED FOR 2019

Directors please present your submissions for  
**MUSICALS, PANTOMIMES and PLAYS**  
or other exciting suggestions  
outlining your ideas for presentation during 2019.

## *APPROXIMATE DATES*

### Main Theatre - Musicals

Mid February/March

Latter part of May/June

Late July/August

Late October/November

### Basement Theatre Pantomimes/Plays

Early January

Early April

Late June/July

Mid September/October

## Submissions close 30th June 2018

*Please present to:* Production Committee

Spotlight Theatre

185-187 Ashmore Road, Benowa

or mail to: Production Committee

Spotlight Theatrical Company,

PO Box 8074 Gold Coast Mail Centre Q 9726

**HOLD ON TO YOUR SHOULDER PADS!**

*HEATHERS* is a darkly comic observation of all things teen! It's 'Mean Girls' with a body count!

*HEATHERS* is a hot headed, wildly inappropriate thrill ride that you won't want to miss!

**BOOK NOW!! 07 5539 4255**

[www.spotlighttheatre.com.au](http://www.spotlighttheatre.com.au)

**STRICTLY LIMITED SEASON 25 MAY - 16 JUNE**

**MA15+ (language, drug and adult references)**



Books, Music *Kevin Murphy &*  
& Lyrics by *Laurence O'Keefe*  
Based on the film *Daniel Waters*  
written by *Daniel Waters*

# HEATHERS

*The Musical*

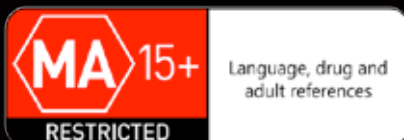
Directed &  
Choreographed by  
*Jamie Watt*

Main Theatre  
*25 May - 16 June 2018*

Book & Pay  
*(07) 5539 4255*

[www.spotlighttheatre.com.au](http://www.spotlighttheatre.com.au)

By arrangement with ORIGIN™ Theatrical on behalf of Samuel French, Inc.



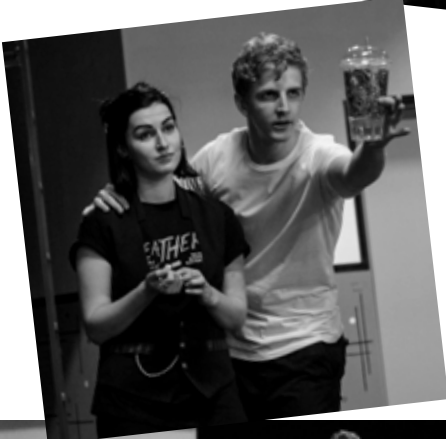


# HEATHERS

*The Musical*

Rehearsal pics courtesy  
Briana Mirabile

**MA 15+**  
RESTRICTED  
Not suitable for people  
under 15. Under 15s must  
be accompanied by a  
parent or adult guardian



**Directed &  
Choreographed  
by  
Jamie Watt**



## AUDITIONS

SUNDAY 27th MAY from 3:00PM

MAIN THEATRE 185-187 ASHMORE ROAD. BENOWA.

FOR FURTHER INFORMATION OR AN AUDITION PACK CONTACT: [notthemessiahspotlight@gmail.com](mailto:notthemessiahspotlight@gmail.com)  
for soloists, vocal ensemble, many cameo roles, orchestra, bagpipes and sheep.

 THE SPOTLIGHT THEATRICAL COMPANY PRESENTS

WRITTEN BY ERIC IDLE & JOHN DU PREZ

HE'S A VERY NAUGHTY BOY

40 YEARS OF MONTY PYTHON

A Comic Oratorio  
by Eric Idle & John DuPrez  
Based on Monty Python's  
LIFE OF BRIAN

DIRECTED BY **TONY ALCOCK**  
MUSICAL DIRECTION BY **MATT PEARSON**  
CHOREOGRAPHY BY **ERIN BRUMMAGE**

**BOOK & PAY**  
(07) 5539 4255  
[www.spotlighttheatre.com.au](http://www.spotlighttheatre.com.au)

**MAIN THEATRE**  
**27 JULY - 18 AUGUST**

BY ARRANGEMENT WITH ORIGIN™ THEATRICAL  
ON BEHALF OF THEATRICAL RIGHTS WORLDWIDE, NEW YORK.

# Spotlight on Youth Theatre



## TEACHING FRATERNITY & ADMINISTRATORS:

**ANDREW COCKROFT-PENMAN** (*Senior Drama Teacher*)

**HANNAH CROWTHER** (*Int. Drama & Snr. Music Theatre Teacher*)

**MATT PEARSON** (*Snr Music Theatre Assistant & M.D.*)

**TERRI WOODFINE** (*Primary Teacher*)

**JACY MOORE** (*Film & TV Teacher*)

**VAL LEFTWICH** (*YT Administrator*)

**VAL LEFTWICH / KAY HAWKER** (*YT Liaisons*)

It has been a busy month for the Youth Theatre. The Intermediate classes play, **Robin Hood** has now been cast. Every pupil has a part and it was fun to see the students working with the script for the first time.

In a few weeks Terri will announce the Junior play and work will begin on that.

The Senior Drama students are working hard on their play for the year which is **A Comedy of Errors** by William Shakespeare. Their production will be early September.

Senior Music Theatre students Showcase is looking really good. I have attended many of the classes and we cannot take any new students into these classes until Term 3.

Kay is currently overseas and will be for the next four weeks so, I thank all parents who have paid their accounts as this does save me so much time. Spotlight has purchased 20 tickets for the Drama students to visit a Brisbane theatre on the 14th June at 7.30pm to see **The Curious Incident of the Dog in the Night time**. We have sent around permission forms to the parents and arrangements have been made on where to meet and drop off. If you would like your Senior student to see this production please contact me on my email <valleftwich41@gmail.com> and I will send you the necessary forms.

Some parents were not able to get size 12 tee shirts for Junior and Intermediate students, so I am pleased to advise that I now have a supply of these coming and they will be here very shortly.

We have so many talented students at Spotlight and many of them play leading roles in musicals at school. This month we are profiling one of our Intermediate students who has been with Spotlight for over two years. Ashley Williams has been chosen to play **Kurt** in the **Sound of Music** at A.B. Patterson School. Well done Ashley.

Regards,

**Valerie Leftwich – Administrator, Spotlight Youth Theatre**



*Photo courtesy Val Leftwich*

## **2019 PLAYBILL SUBMISSIONS CLOSE 30th JUNE 2018**

**Please present to: Production Committee  
Spotlight Theatre  
185-187 Ashmore Road, Benowa  
or mail to: Production Committee  
Spotlight Theatrical Company,  
PO Box 8074 Gold Coast Mail Centre Q 9726**

SPOTLIGHT YOUTH THEATRE  
COMBINED MUSIC THEATRE CLASSES

Present

# MID YEAR SHOWCASE

MAIN THEATRE  
28, 29, 30 JUNE  
7.00 pm

## ARE YOU A FINANCIAL SPOTLIGHT MEMBER?

TO TAKE PART IN OUR SHOWS, VOTE AT MEETINGS & ENSURE  
YOU RECEIVE MEMBER PRICES AND DISCOUNTS

YOU NEED TO

**RENEW / JOIN NOW**

The Membership form can be downloaded from:

[http://spotlighttheatre.com.au/Membership/  
membership\\_form\\_2013.pdf](http://spotlighttheatre.com.au/Membership/membership_form_2013.pdf)

OR visit/phone

**Costume Hire at  
Spotlight Theatre**

**07 5539 4255**

**BECOME A  
SPOTLIGHT  
VOLUNTEER**

## PRESIDENT'S REPORT

I hope you got to see ***Baskerville a Sherlock Holmes Mystery***. Congratulations to Co-Directors Kaela Gray and Katie Grace for assembling such an outstanding cast together to bring this comedy to life. The actors did a fantastic job interacting with each other to have the audiences in stitches. Well done to all involved to bring such fun and laughter to our Basement Theatre.

The Main Theatre has now come alive with ***Heathers The Musical*** directed by the multi-talented Jamie Watt. With thanks to the Gambling Community Fund Grant this show is able to use the new lights installed, so come along and check them out yourself. Tickets available on line at [www.spotlighttheatre.com.au](http://www.spotlighttheatre.com.au) or call the box office on 5539 4255 between 10:00 am and 4:30pm Mon-Fri or 9:00am - 3:00pm on Sat.

With the school holidays fast approaching the Basement Theatre is now in last stages of rehearsals for our pantomime ***Jack and the Beanstalk***. Nathan French a former student of our Youth Theatre is directing his first show at Spotlight. Pantomimes are fun for all ages so why not bring the children and grandchildren along to experience live theatre. Tickets on sale online now. Our Youth Theatre students get an opportunity to Showcase their talents as they perform their half yearly shows.

We can now announce that instead of producing ***Strictly Ballroom*** in 2018 we are going to bring you ***Not the Messiah (he's a very naughty boy)***, a Monty Python spoof directed by Tony Alcock and Musical Director Matt Pearson. This is a very funny show and tickets will be available soon so make sure that you don't miss out. We will be producing ***Strictly Ballroom*** in 2019.

You may have noticed as you arrive at our Theatre that the street sign is looking the worse for wear. The weather has got the better of it and it is showing signs of metal fatigue and rust so it will be removed and replaced with a new LED Screen. We have to wait for City of Gold Coast Approval but we are hopeful that this should not take too long. We have some plans in to landscape the front and also re surface the carpark. We are trying to coordinate all these together to minimise disruption and cost whilst maximising opportunities and potential.

We will constantly be striving to improve the Complex to make sure that everyone's experience is enjoyable.

That's all the news from me this month so until next time look after yourselves and each other.

Kind Regards

***Duncan***



**HUGE SALE**  
at the  
**SPOTLIGHT THEATRE COMPLEX**  
**30th JUNE and 1st JULY**  
**Almost Everything is \$2 except for**  
**the SPECIALS RACK.**

**20's**  
**70's**  
**Hats**  
**Ties**  
**Corsets**  
**Fantasy**  
**Jackets**  
**Many**  
**More**

**9am to 3pm**



Members are advised that the

**ANNUAL GENERAL MEETING**

will be held on

**TUESDAY, 21 AUGUST 2018**

**COMMENCING AT 7.00pm SHARP**

at

**Spotlight Theatre**

**187 Ashmore Road, Benowa**



All members are urged to attend. (For voting rights you MUST be a Financial Member.)

**AGENDA**

Apologies  
Minutes of previous Annual General Meeting  
Matters arising from Minutes  
President's report  
Treasurer's report and Auditor's financial statements  
Other reports  
Election of new office bearers  
General business

If any person wishes to add an item to the Agenda, this must be put in writing, and seconded by another financial member. Any additions must be received by the Secretary seven (7) days prior to the meeting.

**Nomination for Life Membership according to Constitution:**

5(c) Life Membership – The title of 'Life Membership' may be awarded by The Company, at the Annual General Meeting, to a person who has rendered services to The Company for not less than ten years. Any Member of The Company may submit candidates for Life Membership up to one month prior to the Annual General Meeting. A Committee of three (3) Life Members and four (4) Councillors must vet such nominations. When the Committee is satisfied that all requirements are met, the Council shall award Life Membership to the selected Member who will be notified at the Annual General Meeting. To preserve the dignity of Life Membership, no more than two persons shall be admitted as such, during one financial year. *Nominations to be forwarded to shirley@spotlighttheatre.com.au by 21st July 2018.*

The bar will be open for drinks and if you wish to stay after the meeting for a drink, tea or coffee and a chat, a small plate of supper would be appreciated.

*Shirley King*  
*Hon. Secretary*

To: **The Returning Officer**  
**The Spotlight Theatrical Company**  
**PO Box 8074**  
**GOLD COAST MAIL CENTRE QLD 9726**



Re: *Annual General Meeting – Nomination for office*

I (please print name) .....  
hereby declare that I am willing to offer myself for election to a position  
of: .....  
to the Company for the term 2018/2019.

Signed: ..... Date .....

Nominated by: ..... Signature. ....

Seconded by: ..... Signature. ....

**PLEASE NOTE: All nominations must be received in writing by the Returning Officer no later than 24 hours prior to the time for commencement of the meeting.**

To: **The Returning Officer**  
**The Spotlight Theatrical Company**  
**PO Box 8074**  
**GOLD COAST MAIL CENTRE QLD 9726**



Re: *Annual General Meeting – Nomination for office*

I (please print name) .....  
hereby declare that I am willing to offer myself for election to a position  
of: .....  
to the Company for the term 2018/2019.

Signed: ..... Date .....

Nominated by: ..... Signature. ....

Seconded by: ..... Signature. ....

**PLEASE NOTE: All nominations must be received in writing by the Returning Officer no later than 24 hours prior to the time for commencement of the meeting.**

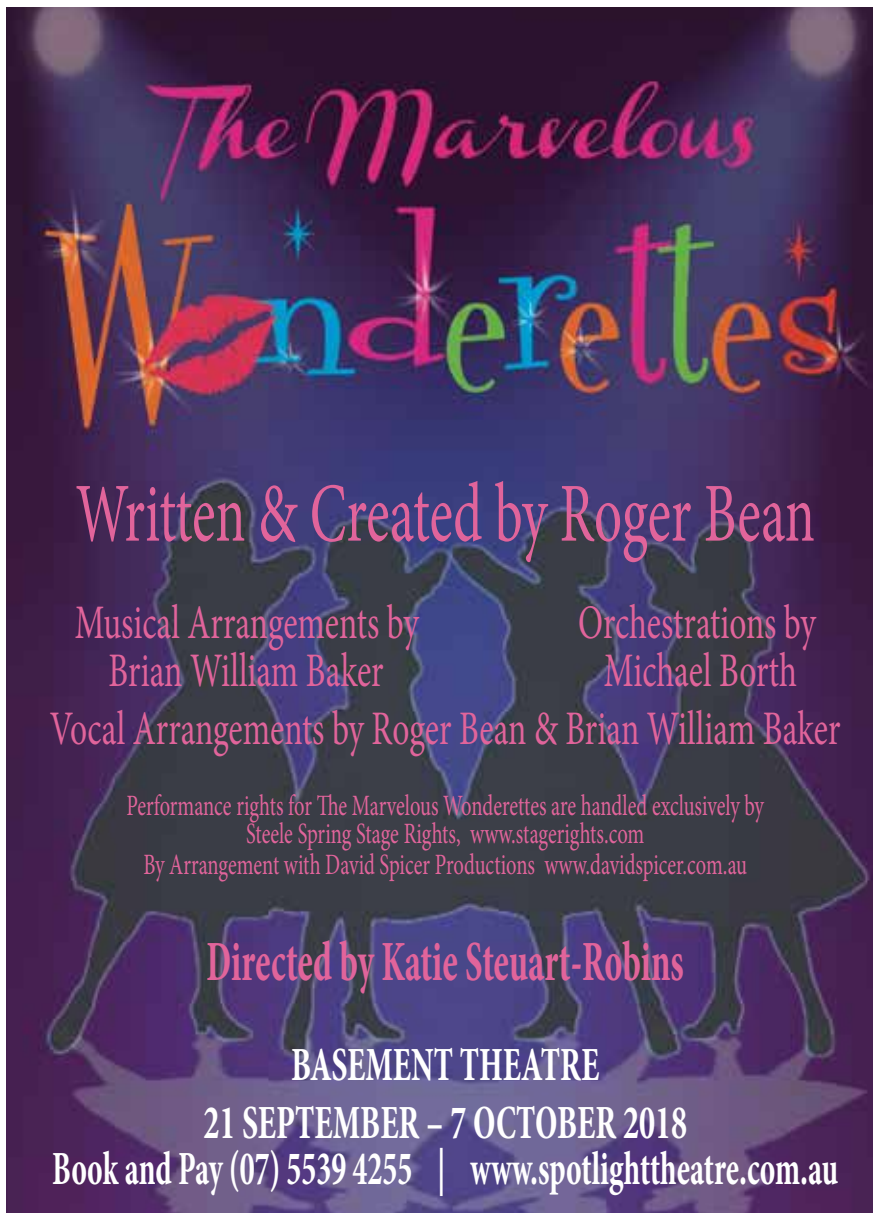
AUDITIONS – SUNDAY 17th JUNE @ 4:00pm

BASEMENT THEATRE

*The Marvelous Wonderettes*

Written & Created by Roger Bean

Directed by Katie Steuart-Robins



**SYNOPSIS:**

Springfield High Songleaders Betty Jean, Cindy Lou, Missy and Suzy cannot wait to enjoy their senior prom. However, when the entertainment pull out at the last minute the four girls step in to save the prom and delight with their perfect four-part harmony.

Including famous pop songs from the 50's and 60's such as "Stupid Cupid," "Dream Lover," "Lollipop," and more, this musical comedy is sure to leave you feeling absolutely marvellous.

For more information or to Book an Audition time please email: [spotlightwonderettes@gmail.com](mailto:spotlightwonderettes@gmail.com)

**Vocalists need to prepare a 90sec pop song.**

**Cindy Lou** (18, 28)

Vocal Range: Mezzo-Soprano Belt: E3–F5. Sings melody line on most songs, so the other girls hang their vocals on this voice. Among the songs she sings lead are: 'Allegheny Moon,' 'Son of a Preacher Man,' and 'Maybe'.

**Missy** (18, 28)

Vocal Range: Soprano: G3–A5. Wide range, floating high vocals and belting throughout the show. Among the songs she sings lead are: 'Secret Love,' 'You Don't Own Me,' and 'Wedding Bell Blues'.

**Betty Jean** (18, 28)

Vocal Range: Alto with strong low range: D3–E5. Among the songs she sings lead are: 'Lipstick on Your Collar,' 'I Only Want To Be With You,' and 'That's When The Tears Start.'

**Suzy** (18, 28) This role requires an excellent part singer and expert comedienne.

Vocal Range: Mezzo-Alto with both sweet and soulful voice: G3–E5. Among the songs she sings lead are: 'Stupid Cupid,' 'Hold Me, Thrill Me,' and 'Rescue Me'.

Spotlight Theatre Artist's Review Seniors

known as

**STARS**

Noni Buckland  
STARS Liaison



We have now completed our first concerts at the following venues:-

Ozcare – Burleigh                      Bluecare Pineshaven – Elanora  
The Terraces – Varsity Lakes                      Arcare – Helensvale  
and Sandbrook – Burleigh Waters.

We have had an excellent response to our new group from our audiences, including staff and residents. We have a very busy month coming up in June with six concerts to perform.

I have included a photo of our opening number SIDE BY SIDE with Marlene, Lyn, Marilyn, myself, Kerry and Sam.

I have also included a photo of our Harem number with Kerry, myself and Sam.

Now back to the boards.

**Noni**



## JACK AND THE BEANSTALK

*The Sky's The Limit!*

Jack is a lovable village boy living a normal life with his quirky mother.

One cow and magical bag of beans later, Jack must deal with a princess, money and an angry giant!

*It's only up from here!*

**GREAT FAMILY FUN!**

### MICHELLE EDWARDS RUNS FOR CHARITY IN THE BALI HOPE ULTRA MARATHON Please Help Michelle achieve her goals by donating to this worthy cause.

Michelle Edwards, The Spotlight Theatrical Company Treasurer is currently in Indonesia running in the **Bali Hope Ultra Marathon**.

*"This marathon aims to fund 100 disadvantaged children through primary school in Northern Bali. Away from the tourist highlights, Bali has areas of high poverty, with some families living on little more than \$2 a day. I believe education is the most powerful tool we can use to alleviate poverty which is why I have joined the **Bali Hope Ultra**. Please help me raise money for education by donating to my campaign at:*

<https://thebalihopeultramarathon2018>.

[everydayhero.com/au/run-well-with-m-e](http://everydayhero.com/au/run-well-with-m-e)

*Globally, 250 million children lack basic reading, writing and math skills. This is a major global issue. Together, we can make sure 100 children in Bali are no longer a part of this statistic. Every donation can make a difference.*

*Thank you for your support."*





THE SPOTLIGHT THEATRICAL COMPANY

PROUDLY PRESENTS

# WE WILL ROCK YOU

By **QUEEN** and Ben Elton

**DIRECTED & CHOREOGRAPHED BY**  
**CLAY ENGLISH**

**MAIN THEATRE**  
**26 OCT - 17 NOV 2018**

**BOOK & PAY**  
**(07) 5539 4255**  
**[www.spotlighttheatre.com.au](http://www.spotlighttheatre.com.au)**

By arrangement with **David Spicer Productions.**  
[www.davidspicer.com.au](http://www.davidspicer.com.au)

# WE WILL ROCK YOU AUDITIONS

**Sunday 24<sup>th</sup> June 2018**

**MAIN THEATRE**  
Spotlight Theatre Complex  
185-187 Ashmore Road, Benowa

For further information email us at [wwryspotlight2018@gmail.com](mailto:wwryspotlight2018@gmail.com) or to register for an audition please visit [bit.ly/wwryauditions2018](http://bit.ly/wwryauditions2018)

## **IMPORTANT AUDITION INFORMATION**

**Director/Choreographer – CLAY ENGLISH**

### **SHOW DATES**

**PREVIEWS** 24 & 25 OCTOBER 2018  
**RUN** 26 OCTOBER - 17 NOVEMBER 2018

**REHEARSALS WILL BE SUNDAY, MONDAY AND WEDNESDAYS FROM LATE JULY.**

### **From 9:00am DANCE CALL**

This will be a group audition. Please note that you must attend a dance audition, regardless of the role for which you are auditioning.

- \* Please wear **form fitting dance attire** and appropriate footwear (chorus heels for girls). No bare feet will be allowed.

### **FROM 12:00pm VOCAL AUDITIONS**

The vocal auditions will be held in small groups at 30 minute intervals.

- \* You will need to prepare **two contrasting 90 second pieces** in a rock style that best demonstrates your vocal ability.
- \* You will need to provide a backing (CD, AUX or USB) as no repeteur will be available.

**CALLBACKS WILL BE HELD ON MONDAY 2<sup>nd</sup> JULY 2018 AT SPOTLIGHT THEATRE.**

All auditions will be recorded for casting reference.

Please arrive 10 minutes early for your audition to register with our team. If you are going to be late, simply can't make it or just decide not to audition, **please advise the production manager on 0437 752 872** so we are not holding up other auditionees waiting for you.

Please note that if successful, you are committing to rehearsing three times a week until the show opens on the 26<sup>th</sup> of October 2018 and the four weeks of performances. It is the responsibility of the cast member to ensure that they negotiate work and other personal commitments in order to attend all rehearsals and performances. A full schedule is available upon request.



## SHORT SYNOPSIS

**We Will Rock You** (often abbreviated as **WWRY**) is a musical based on the songs of British rock band, **QUEEN** with a book by Ben Elton. The musical tells the story of a group of Bohemians who struggle to restore the free exchange of thought, fashion, and live music in a distant future where everyone dresses, thinks and acts the same. Musical instruments and composers are forbidden, and rock music is all but unknown.

## CHARACTER BREAKDOWN

The creative team are looking for actors over the age of 18 who can convincingly play the following roles:

### **GALILEO**

Male, 20s. Any race. Attractive, sexy, vulnerable, sensitive, doesn't fit in, a rebel, restless, headstrong and stubborn. Tense. Lives on his nerves. On a mission to accomplish something with his life. Tries to find the right way to fulfil his dreams.

**Vocal Range:** D below middle C to A above middle C. High rock voice with strong falsetto. Full voice falsetto is to E two above middle C.

### **SCARAMOUCHE**

Female, 20s. Any race. A rebel. Deeply introverted and complex. An awkward loner. A misfit. Uses her sharp self-deprecating wit to cover her sensitivity and vulnerability. Brittle, hard and bitter. Head strong, sarcastic and stubborn. Defensive. Must be able to transform and blossom as confidence grows. Great comedic skills required.

**Vocal Range:** E below middle C to E two above middle C. Strong rock belt.

### **KILLER QUEEN**

Female, 25-40s. Any race. Ruler of the world, amazing rock/soul voice. Camp, sexy, feisty, funny, powerful and power crazy, ruthless, the BOSS. The quintessence of power and narcissism. The actress playing Killer Queen needs to create a persona that is sexy and alluring while also terrifying and domineering.

**Vocal Range:** E below middle C to E two above middle C. Strong rock belt. Full soul/rock voice.

### **KHASHOGGI**

Male, 25-40s. Any race. Chief of Secret Police. Attractive, sophisticated, intelligent, sinister, cruel, cold but charming. A role with great comedic potential.

**Vocal Range:** D below middle C to Bb above middle C. High rock baritone with strong falsetto. Full voice falsetto to E two above middle C.

### **BUDDY**

Male, 40+. Any race. An ageing hippie with a knack for being inappropriate. Bar man, ex-rebel. A fun-loving philosopher. A hippie stand-up comic type. He's worldly with a natural curiosity and passion for life and saving music. Good rock voice and great comic skills required.

**Vocal Range:** E below middle C to E above middle C. Light rock voice.

### **OZ**

Female, 20s. Any race. Rock chick. Street sexy, womanly, tough, common, foul-mouthed, wild, worldly and experienced. Brit's girlfriend.

**Vocal Range:** A below middle C to E two above middle C. Strong rock belt.

### **BRIT**

Male, 20s-30s. Any race. Big gentle giant with a heart of gold. Oz's boyfriend. Strong, sexy, loveable, innocent, lots of energy, vibrant. Very street and very cool.

**Vocal Range:** D below middle C to B above middle C. Full rock voice.

### **ENSEMBLE**

Male and Female, 20s-30s. All ethnicities to play various ensemble characters. Seeking excellent dancers with strong vocal ability.

**Note:** All auditionees wishing to be considered for Ensemble must be comfortable in revealing costumes.





**BRONZE  
CORPORATE  
SPONSOR**

**LEA**

Securing Peace Of Mind

**Insurance Brokers  
For all your insurance  
requirements contact Glenda  
on (07) 5538 8988**

- SPONSOR -

*Spotlight Theatre acknowledges and thanks*



**Gold Coast City Council**

*for their substantial Rate donation.*

**LOOKING FOR A BARGAIN!  
Don't miss our \$2 rummage  
COSTUMES, ACCESSORIES  
ETC. SALE**

**JUNE 30 & JULY 1  
9:00am – 3:00pm  
PHONE 07 5539 4700**

**SPOTLIGHT  
COSTUME HIRE**

We have thousands of costumes!

**OPENING HOURS**  
MONDAY - FRIDAY  
10:00am - 4:30pm  
SATURDAY  
9:00am - 3:00pm

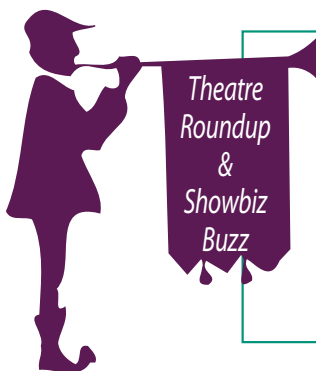
**a huge range of**  
unique & unusual accessories to buy or hire!

Hats, masks, jewellery, wigs, stockings, head pieces & much more

Mehron Theatrical & Special Effects makeup

**5539 4700**

e: [costume-hire@spotlighttheatre.com.au](mailto:costume-hire@spotlighttheatre.com.au)  
www.spotlight-costume-hire.com



**Joel Beskin's 'Theatre Roundup'**  
is now on Air every week on Tuesdays.  
Tune in to 4CRB 89.3FM between 2.35pm and 3pm  
for Community Theatre News and  
**Kate Peters' 'Showbiz Buzz'**  
will air on the same station at 2.15pm Friday afternoons.



# The Spotlight Theatrical Company

Revised

*"Fostering an outlet for  
creative youth and community, while seeking to  
produce vibrant, quality entertainment  
that enriches, engages and educates."*

## 2018 PLAYBILL

Snow White	Basement	3 - 13 Jan
Oliver!	Main	9 Feb - 4 Mar
Baskerville – A Sherlock Holmes Mystery	Basement	27 Apr - 13 May
Heathers – The Musical	Main	25 May - 16 June
Music Theatre Showcase	Main	28, 29, 30 June
Jack and the Beanstalk	Basement	4 - 14 July
Not The Messiah (He's a very naughty boy)	Main	27 Jul - 18 Aug
Senior Drama	Main	7, 8 Sept
The Marvelous Wonderettes	Basement	21 Sep - 7 Oct
Junior Drama	Basement	19, 20, 21 Oct
We Will Rock You	Main	26 Oct - 17 Nov
Intermediate Drama	Basement	30 Nov, 1, 2, Dec
Music Theatre	Main	6, 7, 8, 9 Dec
Spotlight On Christmas	Main	14, 15 Dec



**TICKET PRICING & BOOKINGS:**  
[www.spotlighttheatre.com.au](http://www.spotlighttheatre.com.au) p. (07) 5539 4255  
185-187 Ashmore Rd, Benowa Qld  
[facebook.com/SpotlightTheatricalCompany](https://www.facebook.com/SpotlightTheatricalCompany)

*Spotlight Theatre is a Foundation Member of the Gold Coast Theatre Alliance*

## Special Promotion on Season Tickets

### Great Bargains!

Get in early! CONTACT BOOKINGS 07 5539 4255. \* Special Conditions apply.



Celebrating 60 years of  
Spotlight Theatrical Company  
Diamond Anniversary, 2015

## Season Ticket

SPOTLIGHT THEATRICAL COMPANY



Not Transferable: Not Redeemable for Cash  
Bookings Essential  
Authorised by : \_\_\_\_\_  
Transaction ID: \_\_\_\_\_

This certificate entitles :-

To : \_\_\_\_\_ Shows

Valid: From \_\_\_\_\_ To: \_\_\_\_\_

**NOT VALID: OPENING OR CLOSING NIGHT PERFORMANCES**

185 Ashmore Road BENOWA QLD 4217 Phone: 5539 4255 email: mailbox@spotlighttheatre.com.au

### 2018 TICKET PRICING

#### Main Theatre:

Opening Night \$39, Adults \$34, Concession \$30,  
Member \$29, Child (under 16) \$25,  
Group 10+ \$31

#### Basement Theatre Plays

Opening Night \$37, Adults \$32, Concession \$29,  
Member \$27, Child (under 16) \$25,  
Group 10+ \$29

(Note: Musicals as per Main Theatre)

PANTOMIMES: All tickets \$16, Group of 10+ \$15.

#### NOTE

TICKETS WILL ONLY BE HELD FOR 72 HOURS  
OR 3 BUSINESS DAYS.



## Spotlighter Deadline 19th of each month

Please forward articles and pics to  
[shirley@spotlighttheatre.com.au](mailto:shirley@spotlighttheatre.com.au)

## Don Kibble (Gold Coast)

### Drawing Office Supplies Pty Ltd

18 George Street, Southport 4215 Ph: 0755 320 499

Email: [plans@kibbles.com.au](mailto:plans@kibbles.com.au) Web: [www.kibbles.com.au](http://www.kibbles.com.au) Est.1977

Plan Printing, Photocopying & Binding, Colour Copying, Colour and Black & White Scanning

Plan Reductions & Enlargements, Laminating,

Plan Filing Systems, Drafting Supplies and Plotting Media

## CONTACT INFORMATION – SPOTLIGHT COUNCILLORS 2016-2017

**President:** Duncan Sims e: dunlo@ozemail.com.au  
**Secretary:** Shirley King e: shirley@spotlighttheatre.com.au  
**Treasurer:** Michelle Edwards e: michelle@spotlighttheatre.com.au  
**Vice President:** Patsy Drew e: patsydrew@bigpond.com

### Councillors

Tony Alcock e: mailbox@spotlighttheatre.com.au  
Nathan Skaines e: isaidpetisaidlove@gmail.com  
Katie Steuart-Robins e: kgrace091@gmail.com  
Jamie Watt e: j\_j\_watt@hotmail.com

### Production Committee

**Chair Person:** Tony Alcock e: mailbox@spotlighttheatre.com.au  
**Committee:** Aiden Ossovani, Matt Pearson, Jackie Pointing, Jamie Watt, Shari Ward and Diana Morgan

### Theatre Technical Consultant

Michael Sutton

### Lighting Co-ordinator

Shaun Wilson

**Library** Matt Pearson e: mattp190391@gmail.com

**Small Props** Terri Woodfine

**Insurance** Glenda Kosters Insurance matters e: glenda@leaib.com.au

**Fire & Security Contacts** Tony Alcock Jamie Watt

**Administration Liaison/Group Bookings/Membership Coordinator/ Royalties/Theatre Hire & Usage/Key Dist. & Registration/Gift Coordinator/Volunteer FoH Roster Coordinator/Liaison**

Administration W 07 5539 4255

**Publicity** e: publicity@spotlighttheatre.com.au Tony Alcock

**Social Media** Jamie Watt e: j\_j\_watt@hotmail.com

**Costume Hire** Michelle May W 5539 4700 Tony Alcock – **Costume Coordinator** – W 5539 4255

**Youth Theatre Teachers** e: youth@spotlighttheatre.com.au

Andrew Cockroft-Penman (Senior Drama Teacher), Hannah Crowther (Music Theatre Teacher & Intermediate Drama Teacher), Matt Pearson (Musical Director), Terri Woodfine (Junior Drama Teacher), Jacy Moore (Film & TV Teacher), Martina French (Vocal Coach),

**Youth Theatre Administrator** Val Leftwich e: valleftwich41@gmail.com

**Assistant to Youth Theatre Administrator** Kay Hawker dkhawker@westnet.com.au

**Sponsorships** Erica Graham e: admin@aquashop.com.au

**Bar Manager** - Duncan Sims e: dunlo@ozemail.com.au

**Charity Night Co-ordinator** Helen Maden e: hpmaden2@gmail.com

**G.C. Theatre Alliance Representative** Joel Beskin / Erica Graham

**Webmaster** Michael Thomas e: stc\_webmaster@showbizaustralia.com

**Programmes** Chris Dickinson e: chris@spotlighttheatre.com.au

**Spotlighter Editor** Shirley King e: shirley@spotlighttheatre.com.au

185-187 Ashmore Road Benowa PO Box 8074 GC Mail Centre Q 9726 P: 07 5539 4700

e: mailbox@spotlighttheatre.com.au youth@spotlighttheatre.com.au

Online Booking: www.spotlighttheatre.com.au or Phone 5539 4255

www.spotlight-costume-hire.com