

Official Newsletter of the  
**SPOTLIGHT  
THEATRICAL  
COMPANY**

185-187 Ashmore Road Benowa  
PO Box 8074 GC Mail Centre Q 9726  
Phone 5539 4700

email: [mailbox@spotlighttheatre.com.au](mailto:mailbox@spotlighttheatre.com.au)  
Online Booking: [www.spotlighttheatre.com.au](http://www.spotlighttheatre.com.au)  
or Phone 5539 4255  
[www.spotlight-costume-hire.com](http://www.spotlight-costume-hire.com)



**SPOTLIGHTCHIEF**

ONLINE  
ANYTIME

CATCH US ON FACEBOOK

**APRIL  
11  
-  
28**

**MAY 17 - JUNE 7**



## ANTI-bullying POLICY



Stop and think -  
words can hurt

### **Mobbing**

Mobbing is a particular type of bullying behavior carried out by a group rather than by an individual. Mobbing is the bullying or social isolation of a person through collective unjustified accusations, humiliation, general harassment or emotional abuse. Although it is group behavior, specific incidents such as an insult or a practical joke may be carried out by an individual as part of mobbing behavior.

### **CONSEQUENCES OF BULLYING**





Bullying is unacceptable behavior because it breaches principles of equality and fairness, and it frequently represents an abuse of power and authority. It also has potential consequences for everyone involved.

#### For those being bullied

People who have been bullied often suffer from a range of stress-related illness. They can lose confidence and withdraw from contact with people outside the theatre as well as at the theatre. Their performance can suffer, and they are at increased risk of workplace injury.

#### For the Theatre

Besides potential legal liabilities, the company can also suffer because bullying can lead to:





-  Deterioration in the quality of performance.
-  Increased absenteeism
-  Lack of communication and teamwork
-  Lack of confidence in the company leading to lack of commitment to the job

### **For others at the workplace**



People who witness bullying behaviors can also have their attitudes and performance affected. They can suffer from feelings of guilt that they did nothing to stop the bullying, and they can become intimidated and perform less efficiently fearing that they may be the next to be bullied.


### **RESPONSIBILITIES**

#### **Spotlight Theatrical Company**

-  Ensure that all members, students and workers are aware of the anti-bullying policy and procedures
-  Ensure that any incident of bullying is dealt with regardless of whether a complaint of bullying has been received
-  Provide leadership and role-modeling in appropriate professional behavior
-  Respond promptly, sensitively and confidentially to all situations where bullying behavior is observed or alleged to have occurred


#### **Members, students, workers and volunteers**


-  Be familiar with and behave according to this policy
-  If you are a witness to bullying, report incidents to your Stage Manager, Director, Dance Captain, Supervisor or Teacher as appropriate.

 They are not to mediate but to report directly to the Executive Committee or Artistic Director.

 Where appropriate, speak to the alleged bully(ies) to object to the behavior

## IF YOU THINK YOU HAVE BEEN BULLIED

 Any member, student or worker who feels he or she has been victimized by bullying is encouraged to report the matter to his or her Stage Manager, Director, Dance Captain, Supervisor or Teacher as appropriate. They are not to mediate but to report directly to the Executive Committee or Artistic Director.

 Where appropriate, an investigation will be undertaken and disciplinary measures will be taken as necessary.

## Commitment to promptly investigate complaints

Any reports of workplace harassment will be treated seriously and investigated promptly, fairly and impartially. A person making a complaint and/or who is a witness to workplace harassment will not be victimised.

## Consequences of breach of policy

Disciplinary action will be taken against a person who harasses a member, student or worker, or who victimises a person who has made or is a witness to a complaint as according to the constitution of The Spotlight Theatrical Co on a case by case basis.

Complaints of alleged workplace harassment found to be malicious, frivolous or vexatious may make the complainant liable for disciplinary action.

## Review of policy

This policy and the actions outlined above should be reviewed by each incoming Council as soon as possible after the AGM, unless required earlier because of changes to the risk profile of the workplace or relevant legislation. If necessary, further changes and actions may be introduced to ensure that workplace harassment is prevented and controlled.

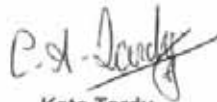
### Endorsement

I/We have committed to this policy and its implementation, and to ensuring a healthy and safe work environment that is free from workplace harassment.



Patricia Drew

President  
The Spotlight  
Theatrical Co



Kate Tardy

Vice President  
The Spotlight  
Theatrical Co



Kay Hawker

Treasurer  
The Spotlight  
Theatrical Co



Tony Alcock

Artistic Director

The Spotlight  
Theatrical Co



Michael Sutton

Senior Technical Consultant

The Spotlight  
Theatrical Co



Rasaratnam Tate

WH&S Consultant

The Spotlight  
Theatrical Co

THE SPOTLIGHT THEATRICAL COMPANY  
PROUDLY PRESENTS



THE FUNNIEST MUSICAL FROM BROADWAY  
WINNER OF FIVE TONY AWARDS

The **DROWSY**  
**Chaperone**

A MUSICAL WITHIN A COMEDY.

Music & Lyrics by

Lisa Greg  
Lambert & Morrison

Book by

Bob Don  
Martin & McKellar

Directed by  
Clem Halpin

by arrangement with Hal Leonard Australia Pty Ltd exclusive agent for Music Theatre International (NY)

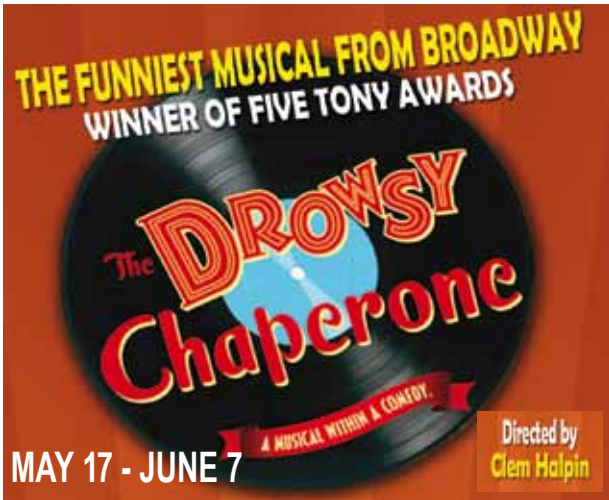
**MAY 17-18-23-24-25-30-31, 7.30 pm**

**JUNE 1-5-6-7, 7.30 pm**

**MATINEES May 26 - June 2, 2.00 pm**

**BOOK AND PAY**  
**55394255**

or online at [www.spotlighttheatre.com.au](http://www.spotlighttheatre.com.au)



**AN  
EXTREMELY  
FUNNY SHOW!**

**HAVE A  
GOOD  
LAUGH!**



This show took a lot longer to cast than normal due the varied age bracket required, yet still being able sing and dance and tap in some cases.

I always say audition day is going to make or break a show. At least that is someone's famous saying. You can grab what you can on audition day or search around taking up valuable rehearsal time.

We finally have a very good cast of eighteen. At this stage everyone is settling into their roles working hard and enjoying themselves.

Shelly and Kate have a mammoth job of making and compiling costumes. They have been lucky enough to now have the benefit of a great team of creative sewers.

Austin, Roger and Mike have started building the 5.4m wing span Bi-plane. Our stage manager, Butch should have an interesting time getting it on and off stage.

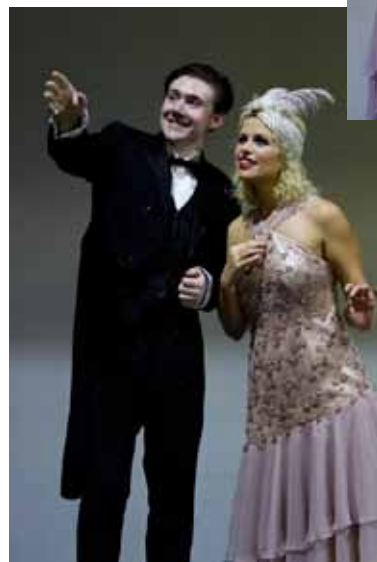
Thanks again David MD, Shani Choreographer and Michael and his Tafe students building the set.

**THE CAST**

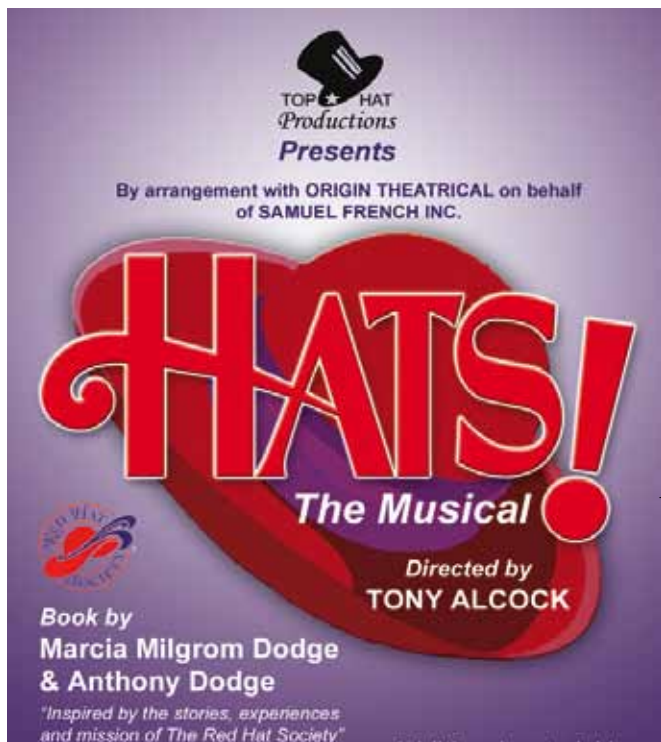
*Man in Chair*  
*Janet Van De Graaff*  
*Robert Martin*  
*George (Best Man)*  
*Kitty*  
*Feldzieg*  
*The Chaperone*  
*Aldolpho*  
*The Gangsters*

*Mrs Tottendale*  
*Underling*  
*Trix the Aviatrix*  
*Ensemble* Melissa Fenton, Jessica Huxley,  
Christine Cooper, Mark Thomson and Denis  
Watkins

Peter Maden  
Charlotte Winter  
Alex Downey  
Donn Tantengco  
Sarah Haynes  
Jim Price  
Alison McKenzie  
Jay Ahrens  
Michael Gallegos,  
Craig Nicholls  
Sandra Harray  
David McNeven  
Lisa Stanley



*Some early  
Photos  
by  
Bronwen  
Rowles*



**HATS! – The Musical**  
*(Growing old disgracefully!)*

**Spotlight's Basement Theatre**

Following the huge success of last year's *IN THE MOOD – Again!*, Top Hat Productions presents a Gold Coast Premiere, celebrating “*women – of a certain age!*”, and why turning 50 is a glorious beginning, not the end!

**Season runs 11- 28 April.**

A brilliant cast includes KIRRI ADAMS, SHEILA BRADLEY, MARTINA FRENCH, CHERIE GOOSEY, KATRINA LARDNER, KATE PETERS & LINDA VAN VIERSEN.

Tickets on sale now on

**5539 4255**

***Wear your red hat to win a bottle of bubbly!***



Ever wondered who the group of women wearing the red hats were?? We've all seen them – laughing, enjoying life and each day as it comes... well here's a show written about them! This show is a “celebration of women – of a certain age!”

Songs include:

\*MY OVEN IS STILL HOT      \* WE'RE FIFTY!

\* WHY AM I INVISIBLE?      \* MY EMPTY NEST

\* THE OLDER THE FIDDLE, THE SWEETER THE TUNE

\* PUT YOUR RED HAT ON!

\* CINCO PASOS DE LA VIDA (5 Stages of a Woman's Life)

***HATS! – The Musical!*** is a new musical about a 49.999 year-old woman who reluctantly faces the inevitable BIG 5-0...until she meets several remarkable women who show her about fun, friendship and forgetting about things that simply don't matter anymore.

If you loved MENOPAUSE, you'll love ***HATS! – the Musical!*** ... Audience members are encouraged to wear their favourite red hats, for a chance to win a bottle of champagne at each performance!

# HATS! The Musical

Exploding with fun, **Hats!** is a new musical about a 49.999 year-old woman who reluctantly faces the inevitable BIG 5-0...until she meets a group of remarkable women who show her about fun, friendship and forgetting about things that simply don't matter anymore.

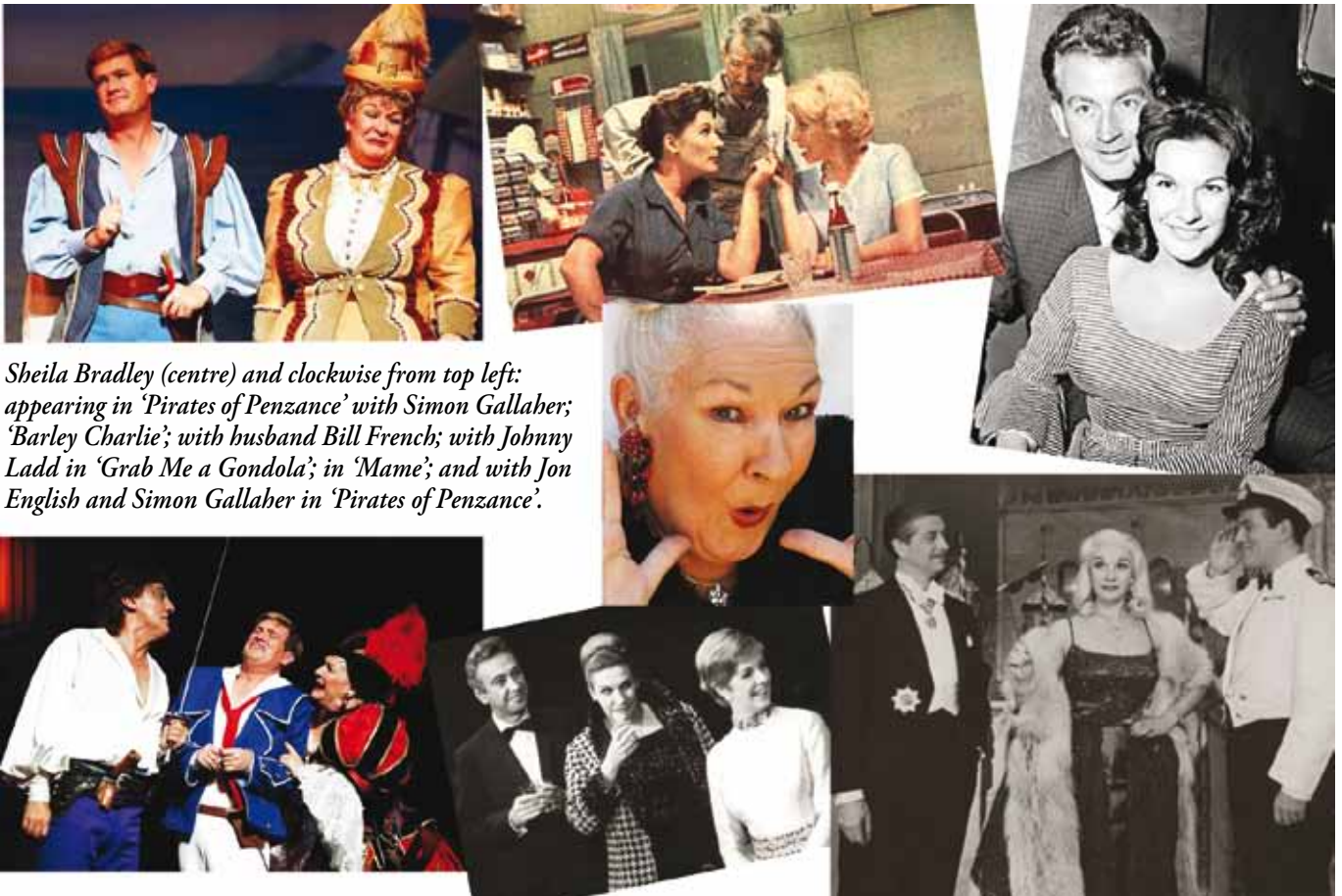
**HATS!** features original music by a team of Grammy®, Golden Globe® and Tony® winning songwriters. It is a joyous, provocative, and hilarious evening for everyone who is 50, knows anyone who is 50 or plans to be 50. If you enjoyed *Menopause the Musical* you will adore **HATS!**

Featuring a cast of seven of the Coast's best known Leading Ladies, **HATS!** runs for approx 90 minutes, without an interval.

One of Australia's most loved performers, Sheila Bradley plays the role of 'Princess' in **HATS – the Musical**.

Sheila's first big break happened on the West End playing 'Lalume' opposite Alfred Drake in *Kismet*. Sheila was then brought to Australia by J.C. Williamsons to appear as the lead in *Grab me a Gondola*. To our delight she decided to call Australia home and went on to star in dozens of musicals – Nancy in *Oliver!*, Vera Charles in *Mame*, the title role in *Hello Dolly*, Anna in *The King and I*, *Canterbury Tales*, *Call Me Madam*, *Me and My Girl* and *Jolson* to name but a few. She was also in great demand as a variety performer appearing at the Doncaster Theatre Restaurant, The Livingroom, Henry Africa's and Paul Sharratt's Music Hall. She appeared in many iconic Australian television shows – *Homicide*, *Barley Charlie*, *The Auntie Jack Show* and the notorious *Number 96*.

Most recently she has been touring with her own cabaret show *The Cat, The Rat and Me* as well as appearing in *Waiting in the Wings* at GCLT and *In The Mood, Again* for Top Hat Productions.



Sheila Bradley (centre) and clockwise from top left: appearing in 'Pirates of Penzance' with Simon Gallaher; 'Barley Charlie'; with husband Bill French; with Johnny Ladd in 'Grab Me a Gondola'; in 'Mame'; and with Jon English and Simon Gallaher in 'Pirates of Penzance'.

# SPOTLIGHT ON YOUTH THEATRE

JESSICA PAPST (Music Theatre)

Things have been a little quiet from me lately, so I will take this opportunity to catch you all up on the busy hub of Spotlight Youth Theatre's High School Musical classes. We are growing in numbers by the year and are excited about the potential of our wide range of students in 2013. Plenty of great work is underway and we have all really enjoyed the first weeks of Term 1 getting to know each other, working together and learning a little more about improvisation, basic Drama skills, stagecraft and – most recently - auditioning.

The end of Term 1 will see the students working on the area of auditions. The students have been learning a little about the local industry and structures as well as protocol, behaviours and preparations for auditions. Over the final week or two they will also be working on their own application for an audition, including creating a CV, discovering their vocal ranges and even having their headshot taken!

Once again I have the pleasure of working with the lovely Martina French in our classes, as she supports the students with a particular focus on vocal coaching and singing technique. During Term 2 we will be focusing a lot more of on singing and dancing workshops within whole-class, small-group and individual environments, gearing towards a mid-year Cabaret Showcase to which you are all, of course, invited!

Finally, congratulations to the four lucky and lovely youth theatre girls who were cast in



GCLT's recent production of *Into the Woods* which was a huge success. Erin Condrin, Bridget Fincher, Millie Talbot and Dana White a joy to work with in their double-cast roles as Snow White and Sleeping Beauty. Director Joshua Mc Cann-Thomson says:

"Thank you so much to my Sleeping Beauties and Snow Whites. It is without a doubt that we will be witnessing these bundles of talent storm the Gold Coast in the very near future. They have been the nicest and most hard-working performers and I offer them the biggest thanks for entering the process later than others and still having a ball and playing a very integral part in what became *Into the Woods*."

It was a very proud moment for me, as their teacher, to watch as they worked so well with other performers and were so eager to learn from these professionals. I asked the girls to write a few words about their experiences for this article, and I hope it inspires some of our other young people to think about auditioning for a local production in the near future. It really is a great experience!

"...it allowed me to experience what happens behind the scenes of a real show. It was fantastic to be able to perform in front of a large audience for a season..."

*Erin Condrin*

"...*Into the Woods* was the best way to start the year. It was so great meeting amazing people that love the theatre just as much as I do. Even though most of the shows involved me being backstage most of the time waiting for my

*Spotlighter April 2013*





# SPOTLIGHT ON YOUTH THEATRE

ADMINISTRATOR: LEA VOSTI

TEACHERS:

PETER MORRISSEY (Drama)  
and JESSICA PAPST (Musical Theatre)  
Assistant Teacher: TERRI WOODFINE



6 seconds on stage, it was worth the wait ...  
Definitely the highlight of my year.” *Millie Talbot*

“...truly an experience I will never forget. The techniques and acting experience I gained from being a part of the show was eye-opening and helped me learn what it’s like to be a part of such a professional production and cast! I loved every second.” *Dana White*

“Working on Into the Woods was such a great experience; it was really exciting to work on such a good show with such a talented cast. Even though it was only a small role, I learnt a lot...” *Bridget Fincher*

Have a fabulous, restful Easter break with your families,  
*Jess*  
*High School Music Theatre Teacher*

## LEA VOSTI

### YT Administrator Report

Things just keep getting better for our Youth Theatre and our finale figure for enrolments is 270 with waiting lists. The Youth Theatre Newsletter is with the Printer and Invoices for Term 2 have been prepared. If for some reason your student is not returning for Term 2 please let me know as I do have students waiting. Have a Happy Easter and Holiday. That’s all for now.

Cheers,  
*Lea*  
*Phone 56308289 for any enquiries.*

### CHANGE OF MEMBERSHIP FEES

Membership will now be under a calendar year, 1 January – 31 December, so renewing members will start from 1 January 2014. Any new members from now will be under new prices. Current members who have joined under old fees will be current until end of December 2013.

**NEW PRICES:**

**Adults - \$10:00**

**Children/Youth (18 years and under) - \$5:00**

*Administration*

## WE WELCOME INTO THE SPOTLIGHT FAMILY

Indiana Linney, Mark Shepherd, Leah Trapp,  
and Patrick Montearth

**TOTAL MEMBERSHIP –1135**

**If you wish to receive a printed version (hard copy) of the monthly Spotlighter Newsletter, please advise**

**Admin at the Costume Hire Shop:**

**Phone 5539 4255 or**

**email: [mailbox@spotlighttheatre.com.au](mailto:mailbox@spotlighttheatre.com.au)  
or post:**

**PO Box 8074 GC Mail Centre, Q 9726**

**The Spotlighter Newsletter is uploaded to our website monthly.**

**So we can keep you informed, please make sure we have your correct Phone Number, email and mail addresses.**

## AUDITION NOTICE – *HAIR*

**Director/ Choreographer Kim Reynolds**

**Auditions will be held at the Main Theatre, Spotlight Theatre Complex**

**Sunday 21st April 2013**

Vocal Auditions from 10.00am

Dance Audition from 6.00pm

***ALL AUDITIONEES MUST BOOK A VOCAL AUDITION AND ATTEND THE EN MASSE DANCE AUDITION.***

Please prepare a verse and chorus from any 60's song (music theatre, pop, rock or folk).

Auditionees need to supply a cut/edited backing track. No pianist will be available on the day.

***PLEASE NOTE: "HAIR" IS STRICTLY AN 18+ CAST.***

*HAIR* – is at once both a joyous celebration of youth and a poignant journey through a tumultuous 1960s America! This exuberant musical about a group of teenagers searching for truth, peace and love in a Vietnam War era America has struck a resonant chord with audiences of all ages. *HAIR* features an extraordinary cast singing a long list of chart topping hit songs, including 'Aquarius', 'Let the Sun Shine In', 'Good Morning, Starshine' and 'Easy To Be Hard'. The themes and struggles in *HAIR*, although from another era, seem vital and relevant to the times we live in today in more ways than you realize until you experience the show first hand.

*HAIR* is about a group of young people in New York City's East Village who band together as a TRIBE. They are a New York contingent of flower children, (a freeform phenomenon that had begun a little earlier in Haight-Ashbury, San Francisco and would subsequently spread to Europe and elsewhere). Taking on the feel of an American Indian tribe, they question authority and the society they are living in and the war in Asia. They seek to find a new way. They yearn to change the world. They begin by recreating themselves. They find a potent organic natural aesthetic; the most dramatic visible element, all the men grow their hair long. They tune in to Eastern thought and meditation. They turn on and drop out. They hang out in self-made clouds of incense and grass. They laugh and cavort, as they find a new freedom of expression and camaraderie. They live in crash pads, in the parks and on the streets. Unkempt, wild, free, and deep, they are unique, colourful, something genuinely original and beautiful...and so hip (yet in a different style from the earlier hipsters and beatniks). A new word is coined to identify them. They come to be called hippies. They try to live by the philosophy of 'Peace and Love'. They are on a trip of liberation. They commune, join hands in protest and in song. Within the context of the play, they struggle for the light, but are forced to fight and die, only to be reborn, again to suffer more, then to rise from the ashes, to glow, to shine...

The authors of *HAIR* played with the idea that this movement was connected astrologically to the heavens, to the coming of the Age of Aquarius...

**Claude** 18+ tenor lead

**George Berger** 18+ tenor lead

**Sheila** 18+ belt lead

**Jeanie** 18+ alto supporting

**Chrissy** 18+ mezzo supporting

**Dionne** 18+ Belt supporting

**Hud** 18+ Baritone supporting

**Woof** 18+ Baritone supporting

**The Tribe** 18+ Ensemble

**To Register for an audition**

**please email [auditions@spotlighttheatre.com.au](mailto:auditions@spotlighttheatre.com.au)**

THE SPOTLIGHT THEATRICAL COMPANY  
PROUDLY PRESENTS



Directed by  
**KIM REYNOLDS**

# HAIR

The American Tribal Love Rock Musical

Book & Lyrics by

**GEROME RAGNI  
& JAMES RADO**

Music by

**GALT MACDERMOT**

Originally Produced by the  
New York Shakespeare Festival Theatre  
Produced for Broadway stage by  
Michael Butler

By special arrangement with Tams-Witmark Music Library Inc. N.Y.

**AUGUST:** 2 - 3 - 8 - 9 - 10 - 15 - 16 - 17  
22 - 23 - 24, 7.30pm

**MATINEES, AUG:** 11 - 18, 2.00pm

**BOOK AND PAY  
5539 4255**

or online at [www.spotlighttheatre.com.au](http://www.spotlighttheatre.com.au)



# Auditions 16th June

## Synopsis

The story takes place in the hectic copywriting department of a busy Metropolitan FM radio station.

Hard nosed salesperson Kate, needs an ad for a dodgy jewellery-retailer written, produced and on-air immediately. Despite the efforts of the Creative Team, the project is thwarted by one disaster after another and eventually the stress becomes all too much! Along the journey, the morals and ethics of the characters are corrupted by a combination of money, favours, fear and power.

*On Air! On Air!* takes you on a lightning paced, funny and at times, sad journey behind the glitter of advertising, exposing a world of high pressure, memorable characters and ethics which change conveniently in their desire to succeed. Where does corruption really begin? What compromises to our personal integrity do we have to make to be successful and what are the consequences? This witty, contemporary play invites you into a world that really exists. Welcome to a very, very bad day in the office!

*On Air! On Air!* is written by Peter Maden, a local talented, award winning copy writer and voice-over artist working in the media for over 25 years. He holds the position of Creative

Director for the Southern Cross Austereo Group and has drawn on his two decades of experience to recreate the authenticity of *On Air! On Air!*

Directed by Helen Maden, this production will be her 6th full length play. Helen has received two nominations for "Best Director" at the Gold Coast Area Theatre Awards for *A Street Car Named Desire* and *Calendar Girls* and was recently honoured with two awards for 'Best Director' and 'Most Outstanding Production' for *Calendar Girls* at the Gold Coast Little Theatre "Dolphin Awards".

## Character descriptions

*Young Paul:* A teenager 16 - 19 years - Will preferably be tall and thin. "Paul's" son

*Paul:* This role is not open to casting call.

*Paul's Mum:* 40-50 years. Will need to be aged. Housewife. Manipulative in a well meaning way!

*Kate:* Mid 30 - 45 years. Sales. Power dressing, short skirt and heels, ruthless self centred career bitch.

*Shane:* Late 25 - 35 years - Super talented, flighty, eccentric copywriter.

*Campbell:* Early 30's - Genial, accommodating copywriter. Nice guy.

*Jane:* Early 30's - Copywriter. Slightly hippy/alternative, out to save the planet .

*Daryl:* 45 - 65 years - Overweight, bombastic, opinionated copywriter.

*Low:* 50 - 60 years - Conservatively dressed, genial yet manipulative Sales Manager.

*Craig:* 30 - 50 years - Bureaucratic, stubborn. Middle management, Production Manager.

*Tiffany:* 25 - 35 years - Receptionist with a quick wit and acid tongue. Tarty.

*Aaron:* Inexperienced, new salesperson to the team. Eager to succeed but floundering.

*Wayne:* Bogan.....very stupid listener/prize winner.

*Kelvin Porter:* Business man. Collar and Tie.

*Ambulance Officer* - no lines - appearance at end of the play.

Note: The characters of *Aaron*, *Wayne*, *Kelvin Porter* and *Ambulance officer* will all be played by the same person.

Ability to show versatility required.

For audition details, please contact the director through the “audition” page on the Spotlight website.

**Register for an audition please email [auditions@spotlighttheatre.com.au](mailto:auditions@spotlighttheatre.com.au)**



## **Spotlight Theatrical Company is seeking**

### **Musical/Play Submissions for 2014**

Prospective Directors please present your submission for Musicals, Pantomimes and Plays outlining your ideas for presentation.

***Please include:***

- Letter of Proposal • Set and Props Design • Synopsis of Show
- Character Descriptions • Costume Information • Production Team (if known) • Anything else you feel may assist your proposal

***Approximate dates*** in 2014 will be

#### **Main Theatre - Musicals**

Mid February/March

Latter part of May/June

Late July/August

Late October/November

#### **Basement Theatre**

#### **Pantomimes/Plays**

Early January

Early April

Late June/July

Mid September/October

**Submissions close 30th June 2013**

Please present to: **Production Committee**

**Spotlight Theatre**

**185-187 Ashmore Road, Benowa**

or mail to

**Production Chairperson**

**Spotlight Theatrical Company,**

**PO Box 8074**

**Gold Coast Mail Centre Q 9726**

**EARLY AUDITIONS**  
**WILL BE HELD**  
**FOR THE FIVE PRINCIPAL ROLES**  
**IN**



The Spotlight Theatrical Company  
Proudly Presents  
Andrew Lloyd Webber's

The  
**PHANTOM**  
of the  
**OPERA**

*Music by*  
Andrew Lloyd Webber

*Lyrics by*  
Charles Hart

*Book by*  
Andrew Lloyd Webber &  
Richard Stilgoe  
*Additional Lyrics by*  
Richard Stilgoe

Based on "Le fantôme de l'Opéra" by Gaston Leroux  
By arrangement with ORIGIN™ THEATRICAL on behalf of Theatrical Rights Worldwide, New York

Oct 25-26-31 7.30pm

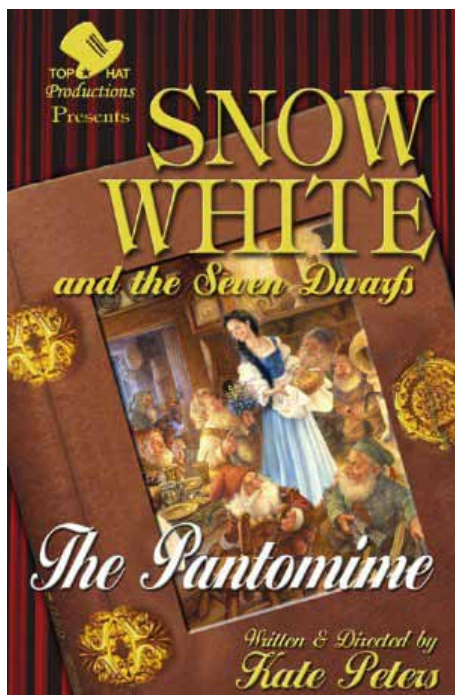
Nov 1-2-7-8-9-14-15-16-21-22-23 7.30pm

Matinees Oct 27 2.00pm Nov 3-10-17 2.00pm

BOOK AND PAY  
**5539 4255**

or online [www.spotlighttheatre.com.au](http://www.spotlighttheatre.com.au)

**CHECK THE SPOTLIGHT WEBSITE – auditions – FOR DETAILS**  
**[www.spotlighttheatre.com.au](http://www.spotlighttheatre.com.au)**  
**or PHONE SPOTLIGHT THEATRE 07 5539 4255**



**AUDITIONS FOR TOP HAT PRODUCTIONS'**  
**June/July School Holiday Pantomime -**  
**SNOW WHITE AND THE SEVEN DWARFS**  
 7 - 9pm, Sunday 14th April at  
 Spotlight's Basement Theatre,  
 185 Ashmore Road, Benowa

*For registration and enquiries please call Producer/Director  
 KATE PETERS on 07 5539 6456 or email [peterslk@iprimus.com.au](mailto:peterslk@iprimus.com.au)*

All parts are open - auditionees need to be present for a Dancers En Masse audition from 7-7.30pm, then do an individual audition at a time allotted. Auditionees need to prepare 16 bars of a Broadway-style song and bring their own backing CD, a recent photograph and a Resumé.

Roles to be cast:

- Snow White** (15-20 years), must sing/dance/act
- Prince Leopold** (15-20 years), must sing/dance/act
- The Wicked Queen** (open age), must sing/act
- Dame Whoopsie** (Snow White's Nurse), must sing/dance/act

**The Huntsman / Duke Darcy** (The Prince's Friend) (open age), must sing/act

**Dwarfs/Townpeople:** (Junior Chorus - child performers, male or female), must sing/dance/act  
 Doc, Grumpy, Happy, Sneezy, Bashful, Sleepy, Dopey - all have lines.

A number of townspeople are also sought - child performers preferred. Must sing/dance/act.

*Auditionees should note that the season is TWO SHOWS A DAY over a 10 day period in the school holidays. All cast members must be present for all shows. Season is Wednesday - Friday 26-28 June, shows at 10.30am and 1.30pm, then Saturday 29 June, shows at 11.00am and 2.00pm. Week 2 is Monday-Friday 1-5 July at 10.30am and 1.30pm, then Saturday 6 July at 11.00am and 2.00pm.*

## DATE CLAIMERS

**2013**

**auditions**

**SNOW WHITE AND THE SEVEN DWARFS - SUNDAY 14TH APRIL**

(A TOP HAT PRODUCTION SHOWING AT SPOTLIGHT THEATRE)

**HAIR - SUNDAY 21ST APRIL**

**ON AIR! ON AIR! - SUNDAY 16TH JUNE**

**PHANTOM OF THE OPERA - EARLY AUDITIONS FOR 5 PRINCIPAL ROLES**

**SEE WEBSITE AUDITION PAGE**

**OR PHONE SPOTLIGHT THEATRE ON 07 5539 4255**

# My Gourmet Meats On Slatyer

**NOW OPEN**

## **NEW OWNERS**

**Bronberg Plaza, 150 Slatyer Avenue, Benowa,  
Hours**

**Mon - Fri: 9:00 am - 6:00 pm**

**Sat: 9:00 am - 5:00 pm**

**Phone (07) 5527 8882**

My Gourmet Meats on Slatyer is on Facebook.

## **SPECIAL OFFER**

**FOR SPOTLIGHT THEATRE MEMBERS**

**THIS VOUCHER MUST BE PRESENTED**

*My Gourmet Meats  
On Slatyer*

**QUALITY  
BUTCHER SHOP**



**NOW  
OPEN**

**15%**

**DISCOUNT  
VOUCHER**

**VALID UNTIL 30 April 2013**

*My Gourmet Meats  
On Slatyer*

**QUALITY  
BUTCHER SHOP**



**NOW  
OPEN**



# THE SPOTLIGHT THEATRE PLAYBILL FOR 2013

## 2013 Spotlight Playbill

Production	Theatre	Dates
Red Riding Hood and the Great Cosmic Caper	Basement	Jan 11 - 18
You're a Good Man Charlie Brown	Main	Feb 22 - Mar 16
HAT'S The Musical*	Basement	Apr 11 - 28
The Drowsy Chaperone	Main	May 17 - Jun 8
Snow White and the Seven Dwarfs*	Basement	Jun 26 - Jul 6
HAIR The Musical	Main	Aug 2 - 24
High School Drama		Sept 6 & 7
On Air On Air	Basement	Sep 20 - Oct 5
Junior Primary		Oct 19 & 20
The Phantom of the Opera	Main	Oct 25 - Nov 23
Senior Primary		Nov 28, 29 & 30
High School Musical		Dec 5, 6, 7 & 8
Title of Show		Dec 11, 12, 13, 14 & 15

\* Snow White and the Seven Dwarfs is a Top Hat Production

\* HAT'S The Musical is a Top Hat Production

## 2013 Ticket Prices

Single Tickets	MAIN THEATRE	BASEMENT
<b>Opening Night</b>	\$35.00	\$35.00
Adult	\$30.00	\$30.00
Concession	\$25.00	\$25.00
Member	\$24.00	\$24.00
Children (16 & under)	\$18.00	\$18.00
Pantomime	\$16.00	\$16.00

Group Bookings	MAIN THEATRE	BASEMENT
Group 10 - 19	\$27.00	\$27.00
Group 20 +	\$24.00	\$24.00





## NOTICE TO MEMBERS

THE SPOTLIGHTER IS NOW DIGITAL.

IF YOU WISH TO RECEIVE A PRINTED VERSION (HARD COPY) OF THE MONTHLY SPOTLIGHTER NEWSLETTER,

YOU MUST ADVISE ADMINISTRATION BY PHONE: 07 5539 4255

BY EMAIL: MAILBOX@SPOTLIGHTTHEATRE.COM.AU

OR BY POST: PO BOX 8074 GC MAIL CENTRE Q 9726

AND A PRINTED VERSION WILL BE POSTED TO YOU, *OR*

ALTERNATIVELY YOU CAN COLLECT YOUR COPY FROM ADMINISTRATION,

AT THE SPOTLIGHT THEATRE COSTUME HIRE SHOP.

THE SPOTLIGHTER IS ONLINE AT

WWW.SPOTLIGHTTHEATRE.COM.AU



For an update on all current and scheduled plays and shows by Gold Coast and Tweed

Shire member groups visit the website:

<http://www.goldcoasttheatre.com.au>

Theatre Alliance Secretary:

[theatrealliance@qld.chariot.net.au](mailto:theatrealliance@qld.chariot.net.au)

THE SPOTLIGHT THEATRICAL COMPANY

COMMITTEE MEETING

is held THIRD TUESDAY EACH MONTH –

7:00pm

at The Spotlight Theatre



**SPOTLIGHTER EDITORIAL  
DEADLINE 19TH  
OF EACH MONTH**

**email : [sking0562@gmail.com](mailto:sking0562@gmail.com)**

**SPOTLIGHTER ADVERTISING RATES**

Per Month: 1/4 page - \$20.00 + GST

1/2 page - 40.00 + GST

Full page \$60.00 + GST



## Joel Beskin's 'Theatre Roundup'

is now on Air every week on Tuesdays  
Tune in to 4CRB 89.3FM between 2.35pm and 3pm

for Community Theatre News

## Kate Peters' 'Showbiz Buzz'

is now on air every week on Monday afternoons

Tune in to Radio 94.1FM at 2.30pm for all the gossip

on current/past/future productions (and performers) on the Gold Coast!

**showbiz**  
australia.com

PROVIDING CREATIVE WEBSITE DESIGN  
FOR PROFESSIONAL AND COMMUNITY  
THEATRE & ENTERTAINMENT IN AUSTRALIA

including...

- SPOTLIGHT COSTUME HIRE  
SPOTLIGHT-COSTUME.HIRE.COM
- SPOTLIGHT THEATRE  
SPOTLIGHTTHEATRE.COM.AU
- Rockit!  
ROCKITBAND.COM.AU
- TMLT  
TMLT.COM.AU
- Messing & Wingo  
THEATRE COMPANY  
MERCURYSWINGS.COM.AU
- TWEED LINKS  
TWEEDLINKSMUSICCLUB.ORG
- Javeenbah  
JAVEENBAH.ORG.AU
- TOP HAT Productions  
TOPHATPRODUCTIONS.COM.AU
- SPIRIT RIDER PRODUCTIONS  
SPIRITRIDERPRODUCTIONS.COM
- QTOP  
QTOP.ORG.AU
- SWING FORCE BIG BAND  
SWINGFORCEBIGBAND.COM.AU
- GOLD COAST AREA THEATRE AWARDS  
GCAREATHEATREAWARDS.COM.AU

Design - Creation - Hosting - Management  
Michael Thomas: (07) 5533 3441

## STAGE WHISPERS MAGAZINE

ONLY  
**\$6.95**

Read the latest  
Theatrical News

NOW ON SALE  
AT  
SPOTLIGHT  
COSTUME  
HIRE

Phone 5539 4255

# Don Kibble (GOLD COAST)

**DRAWING OFFICE SUPPLIES**  
PTY LTD ABN 48 873 687 565

for all your: • plan printing • photocopying • colour copying • binding • laminating  
email: plans@kibbles.com.au

ph: 5532 0499 18 George Street, Southport

fax: 5532 0714

# SPOTLIGHT Costume Hire

We have  
thousands  
of costumes!

Hats, masks, jewellery, wigs,  
stockings, head pieces  
& much more.

185/187 Ashmore Rd Benowa  
(Next to Benowa Gardens Shopping Centre)  
[www.spotlighttheatre.com.au](http://www.spotlighttheatre.com.au)

**HUGE  
RANGE**

of unique &  
unusual  
accessories to  
buy or hire!

## OPENING HOURS

Mon, Tues, Wed, Fri  
9am-5.30pm  
Thurs ~ 9am -7pm  
Sat ~ 9am -4pm

**5539 4700**

e [mailbox@spotlighttheatre.com.au](mailto:mailbox@spotlighttheatre.com.au)  
[www.spotlight-costume-hire.com](http://www.spotlight-costume-hire.com)



## Carpet Cleaning & Pest Control

Gary Matheson  
Proprietor

DISCOUNT FOR SPOTLIGHT MEMBERS

**Stain Removal Specialist,  
Steam or Dry Clean**

PHONE: (07) 5576 2820

MOBILE: 0419 756 127

**YOUR DRY WAY  
PROFESSIONAL**

## SPECIAL THANKS

FOR THE GENEROUS  
DONATIONS

RECEIVED FROM

JUPITERS CASINO GAMBLING  
BENEFIT FUND - \$15,020  
GC COMMUNITY GRANTS FUND -  
\$4,400

LEX BELL Div. 7- \$4,000  
TRISH PEDERSEN ANOTHER GENEROUS  
DONATION OF \$6,000  
WHICH PAID FOR OUR NEW SOUND  
SYSTEM & DIGITAL MICROPHONES.

## BRONZE CORPORATE SPONSOR



Securing Peace Of Mind

Insurance Brokers  
For all your insurance  
requirements contact Glenda  
on (07) 5538 8988



Gambling

**Community Benefit Fund**

Queensland Government

## ACKNOWLEDGEMENT

*Thank you to the Queensland  
Government Community  
Benefits Fund Unit - Office of  
Liquor & Gaming Regulation for  
granting The Spotlight Theatrical  
Company \$31,790.91 towards a  
lighting upgrade.*